

# 1.3 MEGAPIXEL WIRELESS NETWORK CAMERA SERIES

## ADVANCED NETWORK SETUP

Please read instructions thoroughly before operation and retain it for future reference.

## IMPORTANT SAFEGUARD



All lead-free products offered by the company comply with the requirements of the European law on the Restriction of Hazardous Substances (RoHS) directive, which means our manufacture processes and products are strictly "lead-free" and without the hazardous substances cited in the directive.



The crossed-out wheeled bin mark symbolizes that within the European Union the product must be collected separately at the product end-of-life. This applies to your product and any peripherals marked with this symbol. Do not dispose of these products as unsorted municipal waste. Contact your local dealer for procedures for recycling this equipment.



This apparatus is manufactured to comply with the radio interference requirements.

### ***Federal Communications Commission Interference Statement***

This equipment has been tested and found to comply with the limits for a Class B digital service, pursuant to Part 15 of the FCC rules. These limits are designed to provide reasonable protection against harmful interference in a residential installation.

Any changes or modifications made to this equipment may void the user's authority to operate this equipment. This equipment generates, uses, and can radiate radio frequency energy. If not installed and used in accordance with the instructions, may cause harmful interference to radio communications. However, there is no guarantee that interference will not occur in a particular installation. If this equipment does cause harmful interference to radio or television reception, which can be determined by turning the equipment off and on, the user is encouraged to try to correct the interference by one or more of the following measures:

- Reorient or relocate the receiving antenna.
- Increase the separation between the equipment and receiver.
- Connect the equipment into an outlet on a circuit different from that to which the receiver is connected.
- Consult the dealer or an experienced radio/TV technician for help.
- FCC Caution: Any changes or modifications not expressly approved by the party responsible for compliance could void the user's authority to operate this equipment.
- All external cables connecting to this basic unit must be shielded.  
For cables connecting to PCMCIA cards, see the option manual or installation instructions.

This device complies with Part 15 of the FCC Rules. Operation is subject to the following two conditions:

- (1) This device must not cause harmful interference, and
- (2) This device must accept any interference received, including interference that may cause undesired operation.

### ***RF exposure warning***

This equipment must be installed and operated in accordance with provided instructions and the antenna(s) used for this transmitter must be installed to provide a separation distance of at least 20 cm from all persons and must not be co-located or operating in conjunction with any other antenna or transmitter. End-users and installers must be provided with antenna installation instructions and transmitter operating conditions for satisfying RF exposure compliance.

### ***DGT Warning Statement***

Article 12 Without permission, any company, firm or user shall not alter the frequency, increase the power, or change the characteristics and functions of the original design of the certified lower power frequency electric machinery.

Article 14 The application of low power frequency electric machineries shall not affect the navigation safety nor interfere a legal communication, if an interference is found, the service will be suspended until improvement is made and the interference no longer exists.

### ***Trademark Acknowledgements***

iPad® & iPhone® are the registered trademarks of Apple Inc.

Android™ is a trademark of Google Inc. Use of this trademark is subject to Google Permissions.

Microsoft®, Windows® & Internet Explorer® are registered trademarks of Microsoft Corporation in the United States and/or other countries.

## ***Disclaimer***

We reserve the right to revise or remove any content in this manual at any time. We do not warrant or assume any legal liability or responsibility for the accuracy, completeness, or usefulness of this manual. The content of this manual is subject to change without notice.

This product doesn't have a standby / off mode.

## ***MPEG4 Licensing***

THIS PRODUCT IS LICENSED UNDER THE MPEG4 VISUAL PATENT PORTFOLIO LICENSE FOR THE PERSONAL AND NON-COMMERCIAL USE OF A CONSUMER FOR (i) ENCODING VIDEO IN COMPLIANCE WITH THE MPEG4 VISUAL STANDARD ("MPEG-4 VIDEO") AND/OR (ii) DECODING MPEG4 VIDEO THAT WAS ENCODED BY A CONSUMER ENGAGED IN A PERSONAL AND NON-COMMERCIAL ACTIVITY AND/OR WAS OBTAINED FROM A VIDEO PROVIDER LICENSED BY MPEG LA TO PROVIDE MPEG4 VIDEO. NO LICENSE IS GRANTED OR SHALL BE IMPLIED FOR ANY OTHER USE. ADDITIONAL INFORMATION INCLUDING THAT RELATING TO PROMOTIONAL INTERNAL AND COMMERCIAL USES AND LICENSING MAY BE OBTAINED FROM MPEG LA, LLC. SEE [HTTP://WWW.MPEGLA.COM](http://www.mpegla.com).

## ***GPL Licensing***



This product contains codes which are developed by Third-Party-Companies and which are subject to the GNU General Public License ("GPL") or the GNU Lesser Public License ("LGPL").

The GPL Code used in this product is released without warranty and is subject to the copyright of the corresponding author.

Further source codes which are subject to the GPL-licenses are available upon request.

We are pleased to provide our modifications to the Linux Kernel, as well as a few new commands, and some tools to get you into the code. The codes are provided on the FTP site, and please download them from the following site or you can refer to your distributor:

<http://download.dvrtw.com.tw/GPL/IPCAM/F-Series/linux.tar.gz>

# TABLE OF CONTENTS

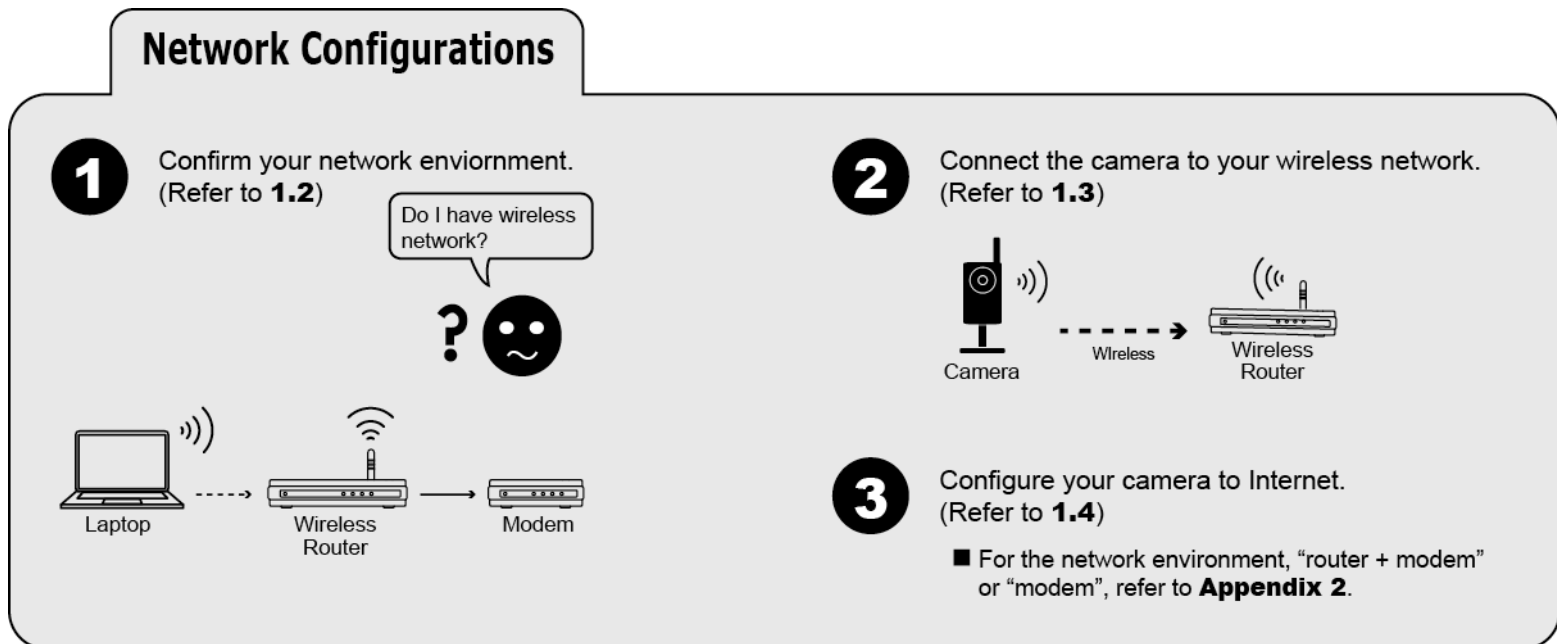
1. NETWORK CONFIGURATIONS WITH WIRELESS ROUTER.....	5
1.1 Assemble & Install Camera .....	5
1.2 Prerequisites .....	6
1.3 Connect Camera to Wireless Network (LAN).....	6
1.3.1 Connect to wireless routers with one press .....	7
1.3.2 Connect to wireless routers by ad-hoc.....	7
1.3.3 Connect to wireless routers by using RJ-45 network cables .....	9
1.4 Connect Camera to the Internet (WAN) .....	11
1.4.1 Configure on Laptop / Computer.....	12
1.4.2 Configure on iPhone / iPad .....	15
1.5 Change Default Account .....	19
1.5.1 From Web Browser .....	19
1.5.2 From iPhone / iPad .....	20
2. BEFORE YOU START TO USE .....	21
2.1 Video Adjustment .....	21
APPENDIX 1 CHANGE IP ADDRESS OF YOUR LAPTOP / COMPUTER .....	22
APPENDIX 2 NETWORK CONFIGURATIONS WITH ROUTER / MODEM.....	25
A2.1 Router + Modem .....	25
A2.2 Wireless Router + Modem .....	27
A2.3 Modem / Hub + Modem .....	32
APPENDIX 3 MOBILE SURVEILLANCE VIA EAGLEEYES .....	35
A3.1 Prerequisites .....	35
A3.2 Where to download .....	35
APPENDIX 4 ENABLE PUSH VIDEO.....	36
A4.1 What's Push Video.....	36
A4.2 Prerequisites .....	36
A4.3 Enable Push Video .....	36
A5.3.1 From iPhone / iPad .....	36
A4.3.2 From Android Mobile Device.....	37
APPENDIX 5 CONFIGURE PORT FORWARDING .....	38
APPENDIX 6 ADDING WIRELESS PROFILE MANUALLY .....	39
APPENDIX 7 Q&A .....	40

# 1. NETWORK CONFIGURATIONS WITH WIRELESS ROUTER

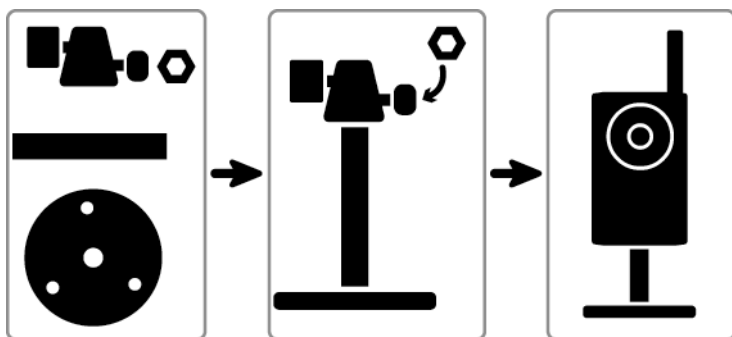
You may configure the network connection of this network camera to Internet for remote surveillance with your laptop / computer, or with your iPhone®, iPad® or Android™ mobile device based on your network environment.

**Note:** The *HTC* Android mobile devices do not support configuring this camera to Internet. Please use your laptop or computer, or other mobile devices, such as iPhone, iPad or other Android mobile device, instead.

This chapter is focused on configuring your camera to Internet with a wireless router. If your network environment doesn't have a wireless network, please refer to "APPENDIX 2 NETWORK CONFIGURATIONS WITH ROUTER / MODEM" at page 25 to configure the camera to Internet.



## 1.1 Assemble & Install Camera



Step1: Fasten the base of the bracket (the round one) to where the camera is installed.

**Note:** The distance between your camera and the location you want to monitor should be 3 ~ 4 meters, for the built-in human detection function to work properly.

Step2: Assemble the bracket and the camera, and adjust the viewing angle of the camera.

Step3: Connect the supplied power adapter to the camera's power jack (DC 5V / 2A) on the rear panel and the power outlet.

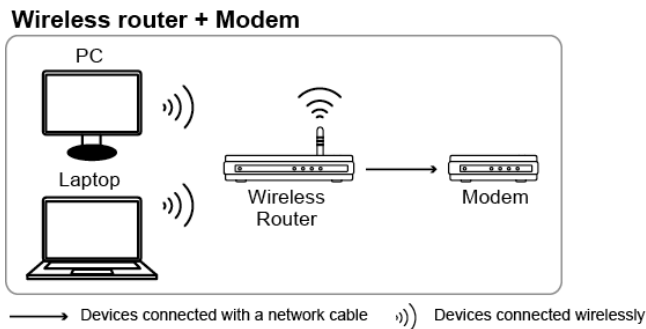
Step4: Fasten the antenna for wireless network connection.

Step5: Continue to proceed network configurations as instructed in the following sections.

**Note:** If you find Wi-Fi connection is weak, replacing the supplied antenna could be an alternative to improve wireless signal. Please be advised that the antenna you choose should meet the required specifications: (1) IEEE802.11b/g/n 2.4Ghz Wireless Network. (2) Antenna with reverse-SMA male connector.

## 1.2 Prerequisites

If your network environment is as illustrated below,



make sure:

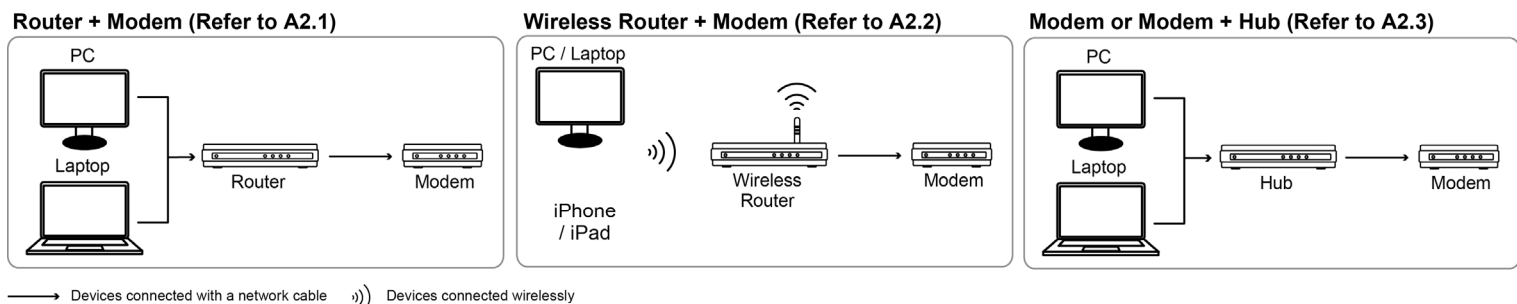
- You know the password to join the network.
- You're sure your wireless router is connected to Internet.
- Your laptop / computer supports wireless network connections, or you have iPhone, iPad or Android mobile device.

**Note:** The *HTC* Android mobile devices do not support configuring this camera to Internet. Please use other mobile devices, such as iPhone, iPad or other Android mobile device, instead.

- (Optional) You know where the wireless router is installed, and if it supports quick wireless connection setup with one press.

If you're using:

- "Router + modem", please refer to "A2.1 Router + Modem" at page 25.
- "Wireless router + modem", but you want to connect this camera to a wireless router via a network cable, please refer to "A2.2 Wireless Router + Modem" at page 27.
- "Modem" or "modem + hub", please refer to "A2.3 Modem / Hub + Modem" at page 30.



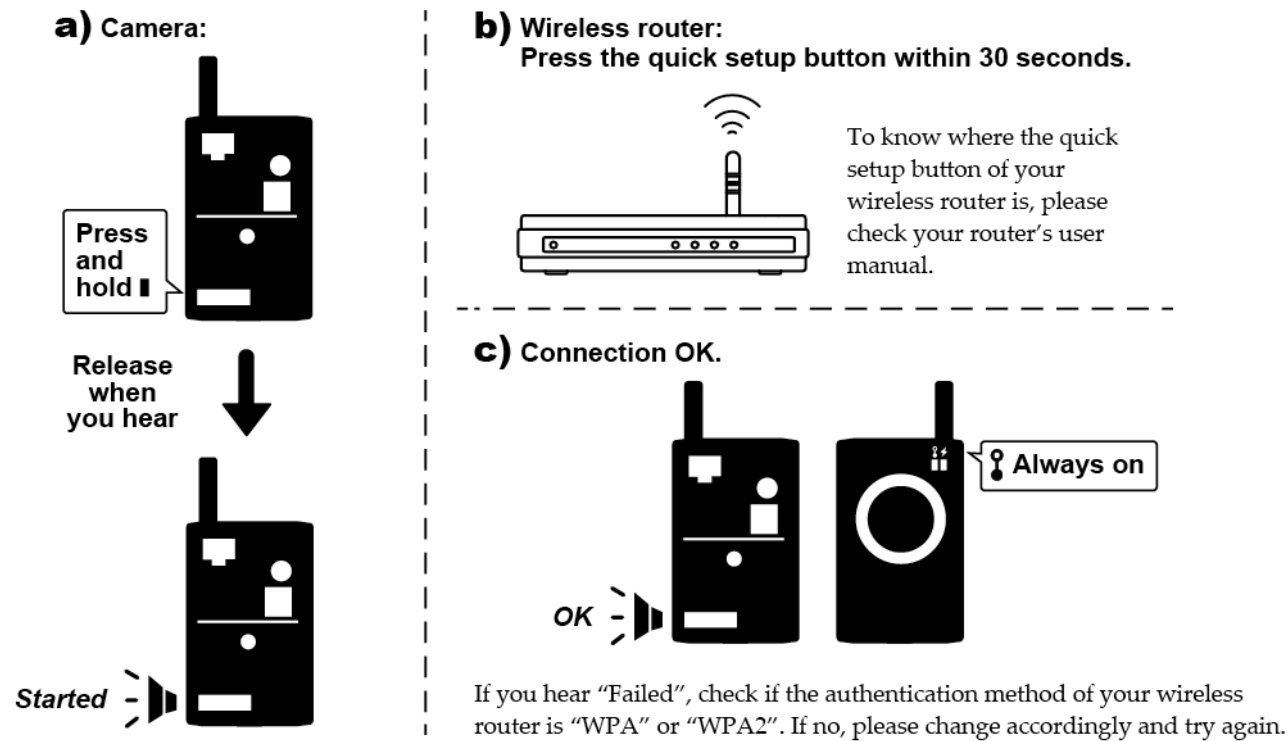
For your account safety, it's recommended to change the default account setting. For details, please refer to "1.5 Change Default Account" at page 19.

## 1.3 Connect Camera to Wireless Network (LAN)

Three methods are available to connect this camera to your wireless network:

- By using **quick wireless connection setup with one press** when your wireless router also supports this function.  
*For details, please refer to "1.3.1 Connect to wireless routers with one press" at page 7.*
- By using **Ad-hoc** when your laptop / computer supports wireless network connections and you know the password to join the wireless network you want.  
*For details, please refer to "1.3.2 Connect to wireless routers by ad-hoc" at page 7.*
- By using **Ad-hoc** from your iPhone / iPad, and you know the password to join the wireless network you want.  
*For details, please refer to "1.3.2 Connect to wireless routers by ad-hoc" at page 7.*
- By using a **RJ-45 network cable** when your wireless router doesn't support quick wireless connection setup with one press and your laptop / computer doesn't support wireless network connections.  
*For details, please refer to "1.3.3 Connect to wireless routers by using RJ-45 network cables" at page 9.*

### 1.3.1 Connect to wireless routers with one press



---

**Note:** The quick wireless connection setup function could be a virtual button on the wireless configuration page, or a physical button on the wireless router depending on the router's brand.

---

**Note:** If you hear "Failed", check if the wireless authentication of your router is WPA or WPA2. If no, please change the authentication method to WPA or WPA2, or check "1.3.2" or "1.3.3" to complete the setup and connection in another way.

---

Continue to connect your camera to Internet.

- If you don't have iPhone, iPad or Android mobile device, go to "1.4.1 Configure on Laptop / Computer" at page 12.
  - If you have iPhone, iPad or Android mobile device, go to "1.4.2 Configure on iPhone / iPad" at page 15.
- 

**Note:** The *HTC* Android mobile devices do not support this function. Please go to "1.4.1 Configure on Laptop / Computer" at page 12 to configure your camera to Internet.

---

### 1.3.2 Connect to wireless routers by ad-hoc

You may connect this camera to your wireless router from your laptop / computer, or from your iPhone / iPad.

#### From laptop / computer

Before starting the setup, make sure:

- Your laptop / computer supports wireless network connections.
  - You know the user name and password to join the wireless network you want to use.
  - The IP address of your laptop is changed to "192.168.2.xx", where xx could be 1 ~ 255 except 10.
- 

**Note:** For details, please refer to "APPENDIX 1 CHANGE IP ADDRESS OF YOUR LAPTOP / COMPUTER" at page 22.

---

- The camera is powered on.

Follow the steps below to wirelessly connect this camera to your wireless router:

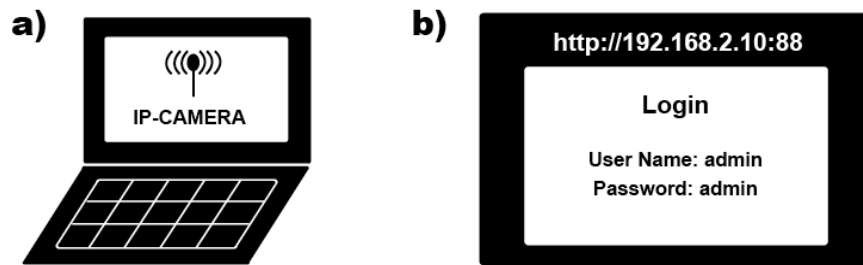
- a) Scan and join the wireless network with the SSID "IP-CAMERA" from your laptop.
- 

**Note:** The wireless network, "IP-CAMERA", is generated from the camera itself. If you can't find it, wait for a while and try again. No password is needed to join the network.

---

b) Open Internet Explorer, and enter “http://192.168.2.10:88” to access and log into the camera.

**Note:** The default user name and password for login are both “admin”.

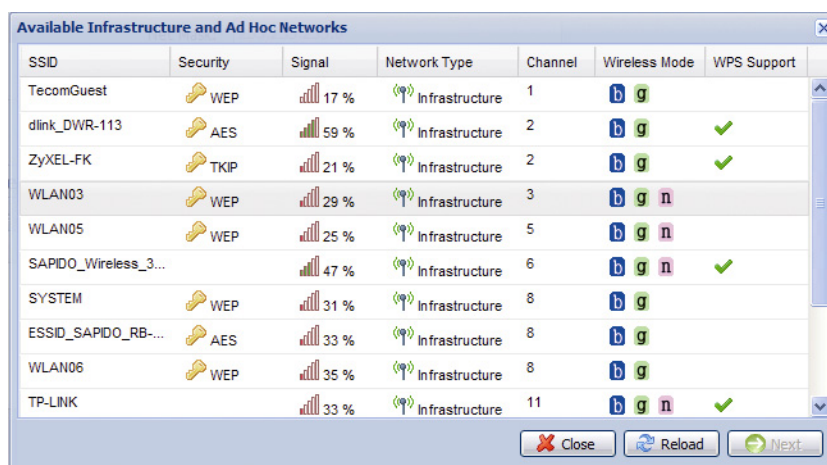
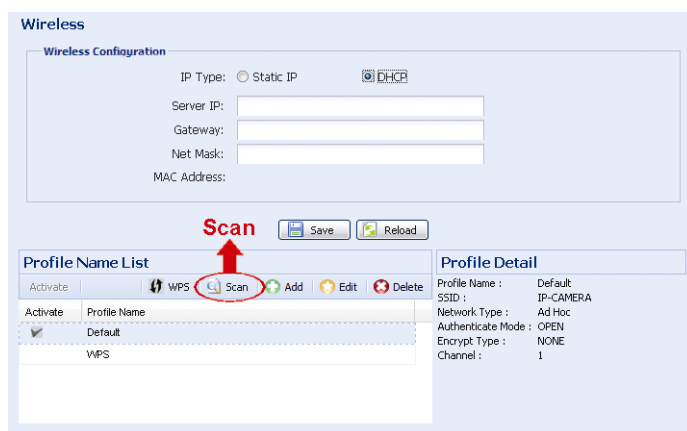


c) Skip the wizard. If you're prompted to install the add-on, “H264 Streaming Viewer”, please install it.

d) Select “Config.” and go to “Network” → “Wireless”.

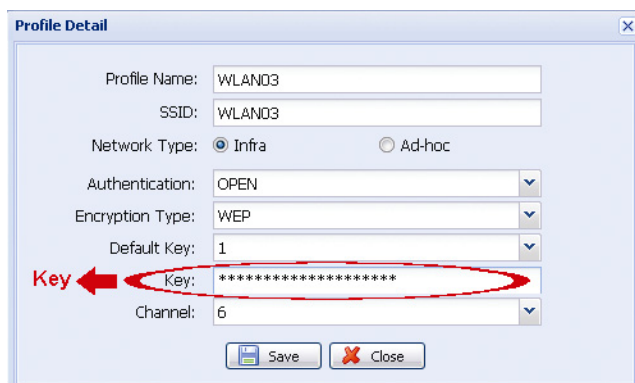
e) Click “Scan” to search all available wireless access points / networks (SSID), and double-click the one your camera is intended to configure for.

**Note:** This method is available only when the signal strength of the wireless access point / network your camera is intended to configure for is not too weak, and it's set to open for searching. If this method is not working, please manually add the wireless profile as described in “APPENDIX 6 ADDING WIRELESS PROFILE MANUALLY” at page 39.



f) The setting for the selected wireless access point / network will be shown except for the “Key” column.

Enter the password to access the selected wireless access point / network in “Key”, and click “Save”. The selected wireless access point / network will be added to “Profile Name List” and activated.



g) Close Internet Explorer, and disconnect the wireless network on your laptop.



- h) Check the LAN status indicator (📶) on the camera, and see if it's always on.
- If yes, the camera is connected to the wireless network successfully.
  - If no, please check if you enter the right password to join the wireless network, and try again. Or, you may refer to “1.3.3” and try again.

**Note:** Please also remember to restore the IP setting of your laptop.

Continue to connect your camera to Internet.

- If you don't have iPhone, iPad or Android mobile device, go to “1.4.1 Configure on Laptop / Computer” at page 12.
- If you have iPhone, iPad or Android mobile device, go to “1.4.2 Configure on iPhone / iPad” at page 15.

**Note:** The **HTC** Android mobile devices do not support this function. Please go to “1.4.1 Configure on Laptop / Computer” at page 12 to configure your camera to Internet.

### From iPhone / iPad

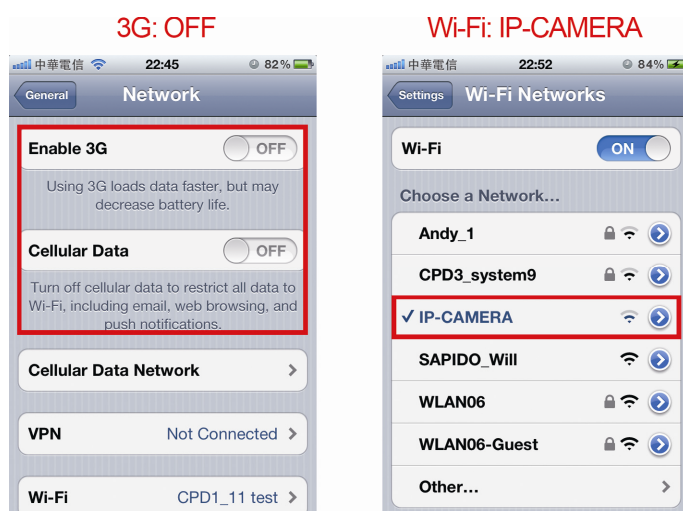
Before starting the setup, make sure:

- You know the user name and password to join the wireless network you want to use.
- The camera is powered on.

Follow the steps below to wirelessly connect this camera to your wireless router:

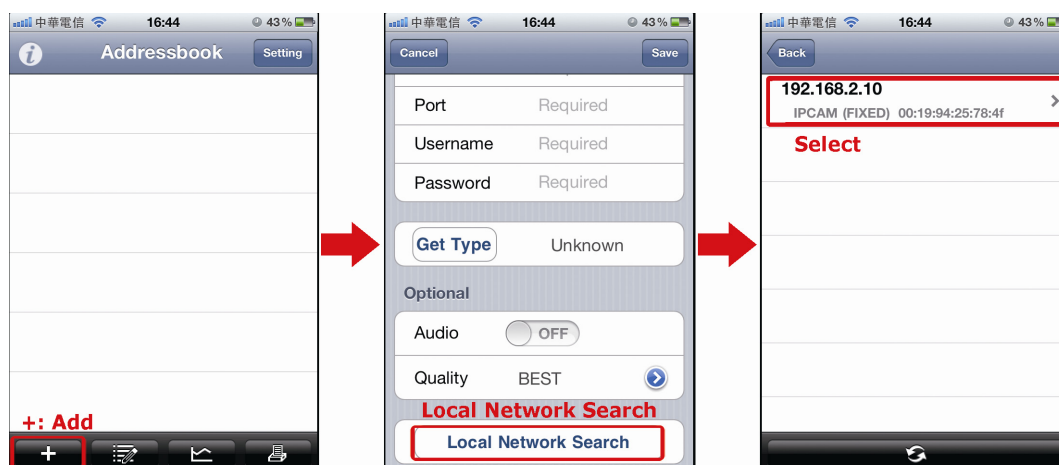
- a) On iPhone / iPad, switch off your 3G network in “Settings” → “General” → “Network”.
- b) Go to “Settings” → “Wi-Fi”, and select “IP-CAMERA” to join.

**Note:** The wireless network, “IP-CAMERA”, is generated from the camera itself. If you can't find it, wait for a while and try again. No password is needed to join the network.



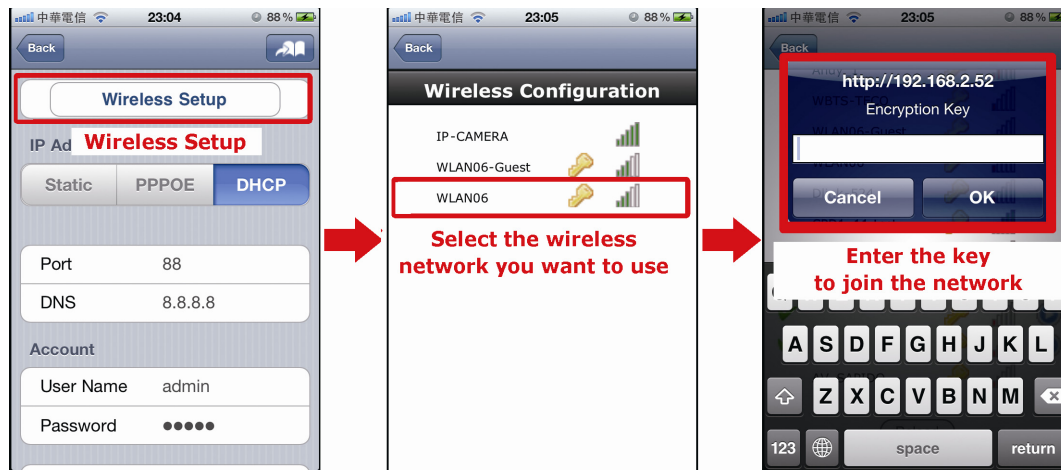
- c) Open “EagleEyes”. In the address book, click “+” to add a new device. Then, select “Local Network Search” to search your network camera. You'll see the default wireless IP address of your camera, “192.168.2.10”.

**Note:** If no IP address is found, make sure you've connected to the wireless network of “IP-CAMERA”, and wait a while and search again.



- d) Select the address to enter the configuration page, and select “Wireless Setup”.

- e) Wait for iPhone / iPad to search available wireless networks, and select the one you want to connect this camera to.
- f) Enter the key to join the wireless network.



Continue to connect your camera to Internet with your iPhone, iPad or Android mobile device.

- If you have iPhone / iPad, go to “1.4.2 Configure on iPhone / iPad” at page 15.
- If you have Android mobile device, go to “1.4.3 Configure on Android mobile phone or tablet” at page 17.

---

**Note:** The *HTC* Android mobile devices do not support this function. Please go to “1.4.1 Configure on Laptop / Computer” at page 12 to configure your camera to Internet.

---

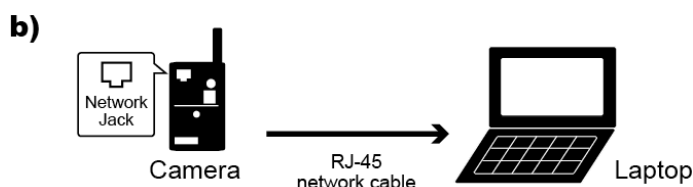
### 1.3.3 Connect to wireless routers by using RJ-45 network cables

Before starting the setup, make sure:

- You know where the wireless router is located.
- Find the RJ-45 network cable supplied with the package, or you can prepare a new one.
- The IP address of your laptop / computer is changed to “192.168.1.xx”, where xx could be 1 ~ 255 except 10.
- Your Windows operating system is Windows 7, Vista or XP.
- You know the password to join the wireless network you want.
- The camera is powered on.

Follow the steps below to wirelessly connect this camera to your wireless router:

- a) Locate the wireless router you're currently using.
- b) Connect the network cable to the camera and your laptop.

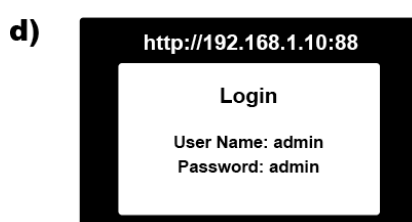


- c) Check the LAN status indicator (🔦) on the camera, and see if it's always on.
  - If yes, the camera is connected to the router successfully.
  - If no, replace the network cable with a new one, and try again.
- d) Open Internet Explorer, and enter “http://192.168.1.10:88” to access and log into the camera.

---

**Note:** The default user name and password for login are both “admin”.

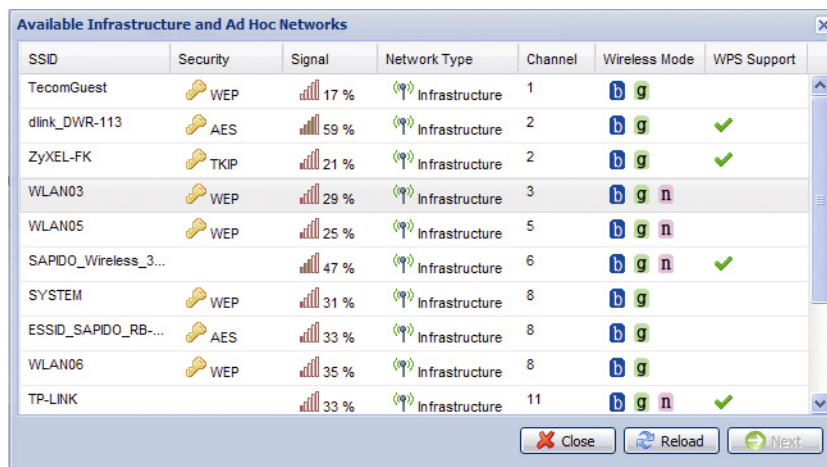
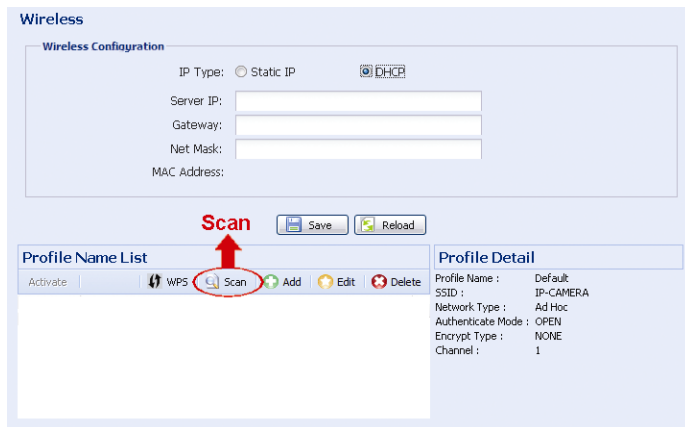
---



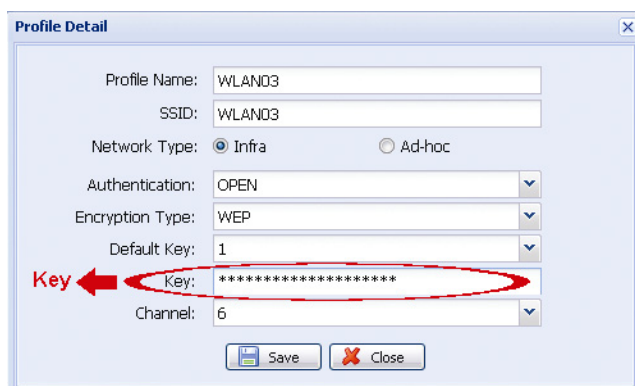
- e) Skip the wizard. If you're prompted to install the add-on, “H264 Streaming Viewer”, please install it.

- f) Select “Config.”, and go to “Network” → “Wireless”.
- g) Click “Scan” to search all available wireless access points / routers (SSID), and double-click the one your camera is intended to configure for.

**Note:** This method is available only when the signal strength of the wireless access point / router your camera is intended to configure for is not too weak, and it’s set to open for searching. If this method is not working, please manually add the wireless profile as described in “APPENDIX 6 ADDING WIRELESS PROFILE MANUALLY” at page 39.



- h) The setting for the selected wireless access point / network will be shown except for the “Key” column. Enter the password to access the selected wireless access point / router in “Key”, and click “Save”. The selected wireless access point / network will be added to “Profile Name List” and activated.



- j) Disconnect the camera and your laptop, and close Internet Explorer.
- k) Check the LAN status indicator (🔌) on the camera, and see if it’s always on.
  - If yes, the camera is connected to the wireless network successfully.
  - If no, check if you enter the right password to join the wireless network, and try again.

**Note:** Please also remember to restore the IP setting of your laptop.

Continue to connect your camera to Internet.

- If you don’t have iPhone, iPad or Android mobile device, go to “1.4.1 Configure on Laptop / Computer” at page 12.
- If you have iPhone / iPad, go to “1.4.2 Configure on iPhone / iPad” at page 15.
- If you have Android mobile device, go to “1.4.3 Configure on Android mobile phone or tablet” at page 17.

**Note:** The **HTC** Android mobile devices do not support this function. Please go to “1.4.1 Configure on Laptop / Computer” at page 12 to configure your camera to Internet.

## 1.4 Connect Camera to the Internet (WAN)

You may use your laptop / computer, or your iPhone / iPad / Android mobile device to complete the network configuration of the camera.

- If you don't have iPhone, iPad or Android mobile device, go to "1.4.1 Configure on Laptop / Computer" at page 12.
- If you have iPhone / iPad, go to "1.4.2 Configure on iPhone / iPad" at page 15.
- If you have Android mobile device, go to "1.4.3 Configure on Android mobile phone or tablet" at page 17.

---

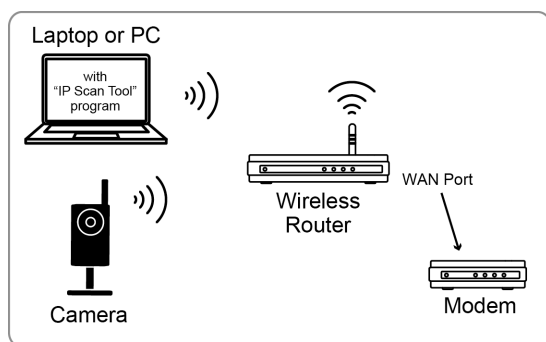
**Note:** The **HTC** Android mobile devices do not support this function. Please go to "1.4.1 Configure on Laptop / Computer" at page 12 to configure your camera to Internet.

---

### 1.4.1 Configure on Laptop / Computer

Before configuring this camera on your laptop / computer, make sure:

- The Windows operating system of your laptop / computer is Windows 7, Vista or XP.
- You've connected the camera to a wireless network as instructed in "1.3 Connect Camera to Wireless Network (LAN)".



- (Recommended) Your wireless router supports UPnP, and this function is enabled.

---

**Note:** If your wireless router doesn't support UPnP, you need to additionally access your router for port forwarding. For details, please refer to "APPENDIX 5 CONFIGURE PORT FORWARDING" at page 38.

---

- You have downloaded "IPScan.exe" in your laptop / computer.

---

**Note:** Please download "IPScan.exe" from [www.surveillance-download.com/user/n812.swf](http://www.surveillance-download.com/user/n812.swf).

---

#### **Connect a camera to the Internet**

Step1: Connect your laptop / computer to the same wireless network as the camera connected.

Step2: Open "IPScan.exe" (🔍) to search your camera, and:

- Note down the IP address and port number after search, such as "192.168.30.155" and "88" in our example.
- Select the IP address, and click "Configure" to note down the gateway IP address. It's the address of your wireless router, and you might need it later for port forwarding.
- Change the port you're using for this camera to other value (such as "8080") in "Web Port" if you know the default port number "88" is blocked by your Internet service provider or phone carrier. Then, enter the user name (admin) and password (admin) to confirm.

The number of "80" is not recommended to use since some Internet service providers and phone carriers might block the use of "80".

**192.168.30.155:**  
IP address assigned by  
your wireless router

**GateWay:**  
The IP address of  
your wireless router

IP	Port	Type	Mac
192.168.30.155	88	IP CAMERA (FIX)	00:19:94:25:78:4f

Server IP: 192.168.30.155    DNS: 168.95.1.1  
MAC Address: 00:19:94:25:78:4f    Web Port: 88  
NetMask: 255.255.255.0    User Name: admin  
GateWay: 192.168.30.1    Password: \*\*\*\*\*

**Web Port:**  
Keep the default value "88",  
or change it to other value  
(such as 8080) if the port  
number of 88 is blocked by  
your service provider.

Step3: Open Internet Explorer on your laptop / computer, and enter the IP address and port number you just found in the URL column to access this camera.

The format is <http://ipaddress:portnum>, such as <http://192.168.30.155:88> in our example.

In the login page, enter the user name, password, and security code to access.

**Note:** Please skip the wizard.

Step4: Go to "Config." → "Wireless", and in the setting page, switch from "DHCP" to "Static".

Change "Server IP", "Gateway", and "Port" as needed.

- "Server IP" is the IP address you're currently using for this camera.
- "Gateway" is the IP address you note down in Step2.
- "Port" is the port number you're currently using for this camera. The default value is "88". If you change it in Step2, please change the value here accordingly.

Wireless Configuration

IP Type:  Static IP     DHCP

Server IP: 192.168.30.155    **Server IP:**  
Change 192.168.2.10 to your current IP address

Gateway: 192.168.30.1    **Gateway IP:**  
Change 192.168.2.254 to the gateway IP address  
you see in Step2

Net Mask: 255.255.255.0

Port: 88    **Port:**  
Change the port number  
to the value you're currently using

MAC Address: 00:19:94:25:78:4f

Save

Profile Name List

Activate	Profile Name
<input checked="" type="checkbox"/>	WLAN03

Profile Detail

Profile Name : WLAN03  
SSID : WLAN03  
Network Type : Infrastructure  
Authenticate Mode : OPEN  
Encrypt Type : AES  
Channel : 6  
Key : \*\*\*\*\*

Step5: Go to "Config." → "DDNS", and enable the DDNS service.

DDNS Configuration    **DDNS: Enable**

DDNS:  Enable     Disable

System Name: eagleeyes

Hostname: MAC00199425784f    .ddns.eagleeyes.tw

E-Mail: manager@tech.com

Save    Reload

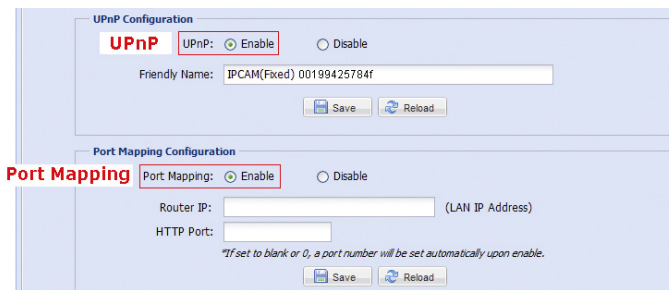
- If your router supports UPnP, please proceed Step6.
- If your router doesn't support UPnP, note down the host name, such as *MAC00199425784f.ddns.eagleeyes.tw*, and click "Save". Then, access your wireless router for port forwarding as instructed in "APPENDIX 5 CONFIGURE PORT FORWARDING" at page 38.

Step6: Go to “UPnP”, and enable the UPnP service.

Then, enable “Port Mapping”, and click “Save” to start port mapping automatically.

When the configurations are saved successfully, you’ll see a message indicating the IP address and port number assigned to your camera.

Note down the IP address and port number, save, and log out the camera.



You can use the host name you noted down in Step5 to access your camera, such as *MAC000199425784f.ddns.eagleeyes.tw*, or the IP address shown in Step6 to access your camera.

And the default port number is 88.

Step7: Go to “Check your connection” below to examine your connection.

### **Check your connection**

Step1: Check if the LAN (📶) and Internet (⚡) status indicators on the camera are always on.

- If they’re both always on (no blinking), go to Step2.
- If the Internet status indicator (⚡) blinks after 5 seconds\*, please continue with configuring port forwarding as instructed in “APPENDIX 5 CONFIGURE PORT FORWARDING” at page 38.

\*The blinking frequency is 5 seconds on → 0.5 second off → 0.5 second on → 0.5 second off → 5 seconds on.

Step2: Connect your laptop / computer to Internet with the wireless network other than this camera is connected, or switch the network mode of your smart phone from wireless to 3G.

Step3: Open Internet Explorer on your laptop / computer, or the built-in web browser on your smart phone, and enter the IP address or host name you just noted down, and the port number in the URL address box of the web browser, and see if you can enter the login page of the camera successfully.

The format is “*http://ipaddress:portnum*” or “*http://hostname:portnum*”.

- If yes, your network setup is completed.
- If no, go to Step4.

Step4: If you can access with your laptop / computer, but you are failed with your smart phone, the port you’re using for the camera might be blocked. Please return to Step2 of “Connect a camera to the Internet” to change the port number to another value.

Step5: Complete the setup, and examine your connection again as instructed in “Check your connection”

## 1.4.2 Configure on iPhone / iPad

Before configuring this camera on iPhone / iPad, make sure:

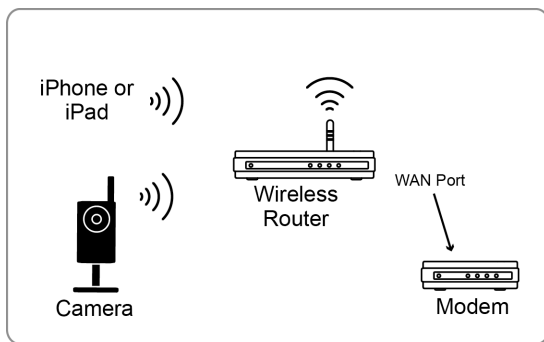
- You have installed our mobile program, *EagleEyes-Lite* or *EagleEyes-Plus*, on your iPhone or iPad. For details, please refer to “APPENDIX 3 MOBILE SURVEILLANCE VIA EAGLEEYES” at page 35.
- (Recommended) Your wireless router supports UPnP, and this function is enabled.

---

**Note:** If your wireless router doesn't support UPnP, you need to additionally access your router for port forwarding. For details, please refer to “APPENDIX 5 CONFIGURE PORT FORWARDING” at page 38.

---

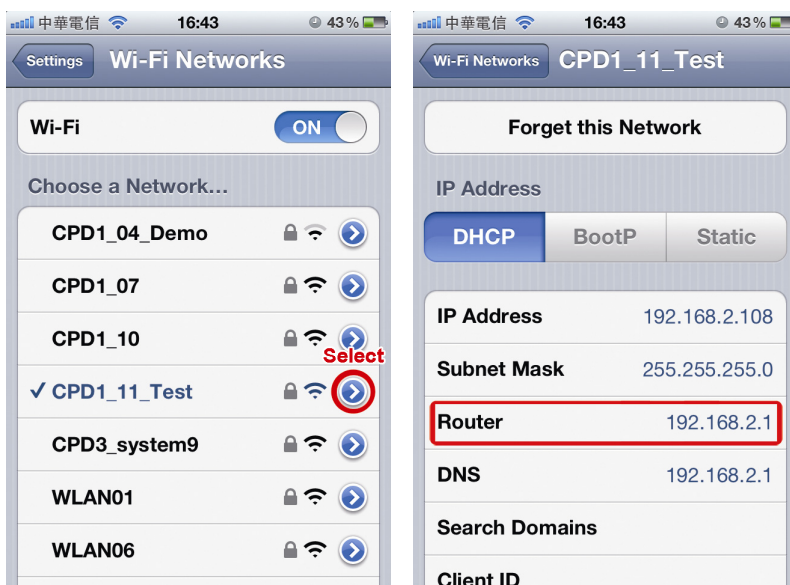
- Make sure your connection is as illustrated



→ Devices connected with a RJ45 network cable  
))) Devices connected wirelessly

- Connect your iPhone / iPad to the wireless router with the camera connected, and go to “Settings” → “Wi-Fi”. Select “>” near the selected wireless network to enter the details.

The IP address shown in “Router” is the IP address used by your wireless router. In the following example, the IP address of your router is *192.168.2.1*.



---

**Note:** This address will be needed when you want to access your router for port forwarding later.

---

### **Connect a camera to the Internet**

Step1: Connect your iPhone to the same wireless network (SSID) as the camera connected.

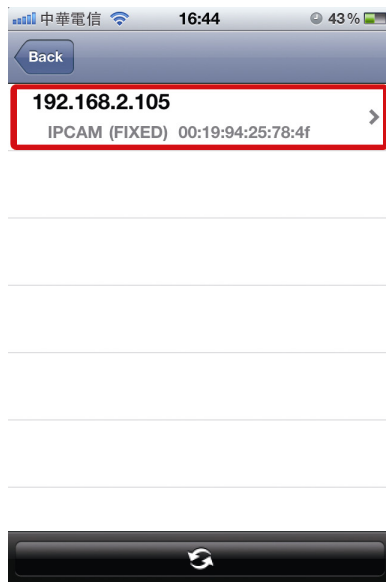
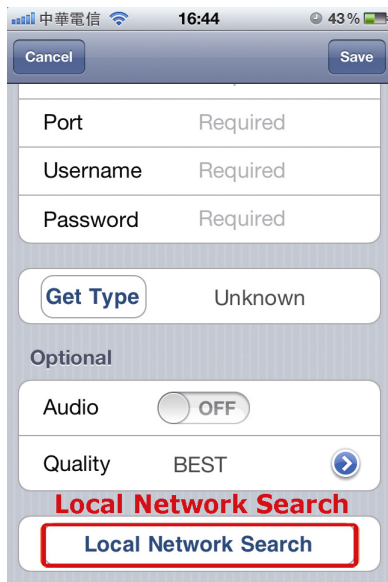
Step2: Open “EagleEyes” on your iPhone or iPad.

In the address book, click “+” to add a new device. Then, select “Local Network Search” to search your network camera. You'll see an IP address assigned by your router.

---

**Note:** If you can't find the camera, make sure your LAN status indicator (📍) is always on, and search again after 3 minutes.

---



**Select:**  
The IP address assigned to the camera  
by your router

Step3: Select the IP address you want to configure to show the IP address setting page.

Then, switch to the tab "Static".

The default port number is 88. You may change it to any value (such as 8080) if the port number of 88 is blocked.

Then, note down the IP address and port number you see here. You might need them for port forwarding later.



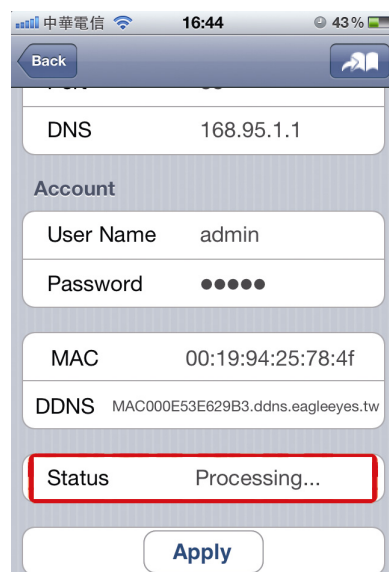
Keep or change the default value, and write it down.

**Note:** It's not recommended to use the port number of 80 since some phone carriers might block this port for network access.

Step4: Select "Apply" to confirm all your changes. Then, wait till you see "Done" or "Fail" in "Status".

Regardless which message you see, proceed as instructed below:

- For **Done**, you'll return to the new device page.
- For **Fail**, select "🗑️" on the top right side. You'll later be prompted to select "DDNS" or "Local IP". Select "DDNS" and return to the new device page.

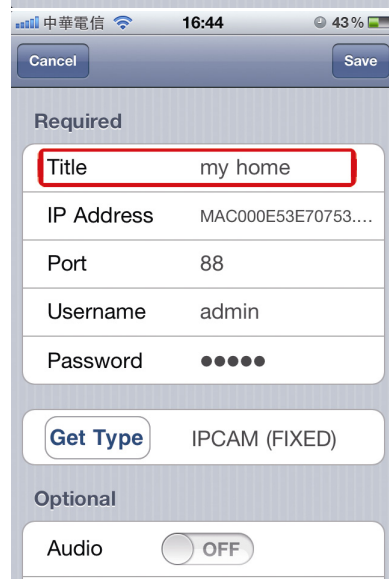


Status Change When Selecting "Apply":

Processing...  
↓  
"Done" or "Fail"

Step5: In the new device page, give a meaningful name for this connection in "Title", and click "Save".

Step6: Go to "Check your connection" below to examine your connection.





## Check your connection

Step1: Check if the LAN (🔌) and Internet (⚡) status indicators on the camera are always on.

- If they're both always on (no blinking), go to Step2.
- If the Internet status indicator (⚡) blinks after 5 seconds\*, please continue with configuring port forwarding as instructed in "APPENDIX 5 CONFIGURE PORT FORWARDING" at page 38.

\*The blinking frequency is 5 seconds on → 0.5 second off → 0.5 second on → 0.5 second off → 5 seconds on.

Step2: Switch the network mode to 3G mode on iPhone or iPad.

Step3: Start EagleEyes, and select the connection you just added to see if you can access the camera successfully.

- If yes, your network setup is successful.
- If no, go to Step4.

Step4: The port you're using for this camera might be blocked by your phone carrier. Please start from Step1 of "Connect a camera to the Internet", and change the port number to another value.

Step5: Complete the setup, and examine your connection again as instructed in "Check your connection".

### 1.4.3 Configure on Android mobile phone or tablet

Before configuring this camera on your Android mobile phone or tablet, make sure:

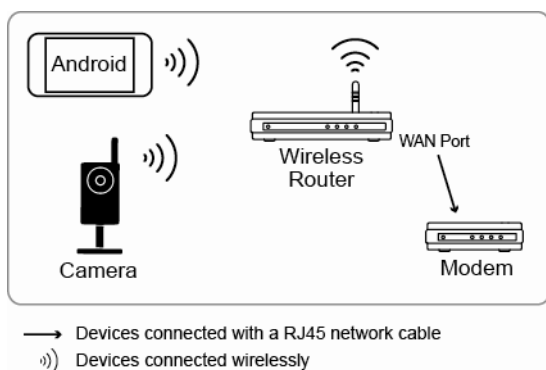
- You have installed our mobile program, *EagleEyes-Lite*, *EagleEyes-Lite+* or *EagleEyes-Plus+*, on your Android device. For details, please refer to "APPENDIX 3 MOBILE SURVEILLANCE VIA EAGLEEYES" at page 35.
- (Recommended) Your wireless router supports UPnP, and this function is enabled.

---

**Note:** If your wireless router doesn't support UPnP, you need to additionally access your router for port forwarding. For details, please refer to "APPENDIX 5 CONFIGURE PORT FORWARDING" at page 38.

---

- Make sure your connection is as illustrated below:



Connect your android device to the same wireless network as the camera connected.

- You know the IP address to access your wireless router. If you don't know, please refer to its user manual.

---

**Note:** This address will be needed when you want to access your router for port forwarding later.

---

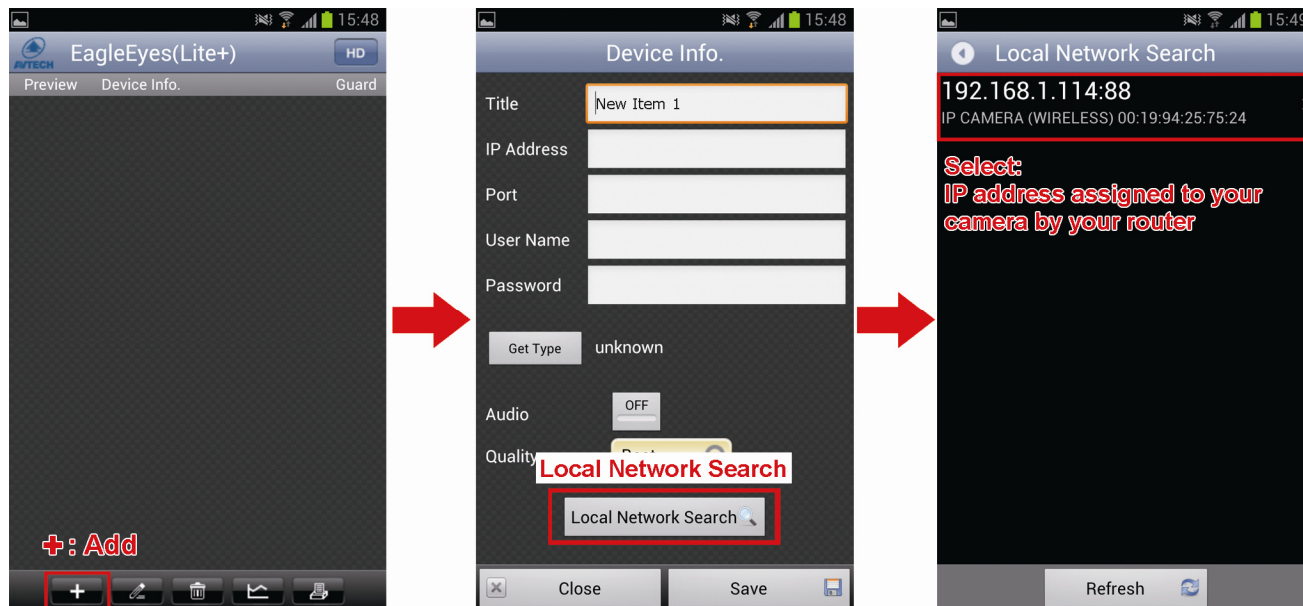
## Connect a camera to the Internet

Step1: Connect your Android device to the same wireless network (SSID) as the camera connected.

Step2: Open “EagleEyes” on your Android device.

In the address book, click “+” to add a new device. Then, select “Local Network Search” to search your network camera. You’ll see an IP address assigned by your router.

**Note:** If you can’t find the camera, make sure your LAN status indicator (🔌) is always on, and search again after 3 minutes.

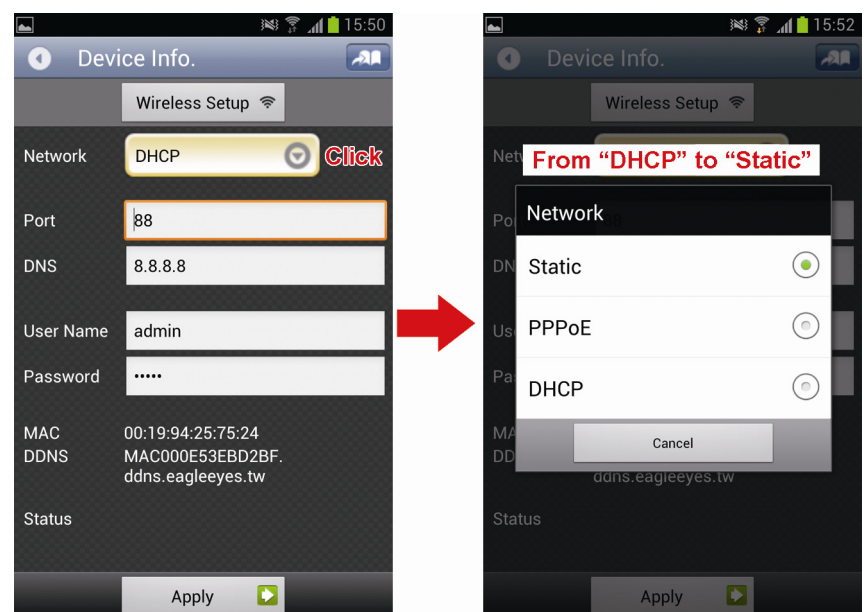


Step3: Select the IP address you want to configure to show the IP address setting page.

Then, click the drop-down list of “Network” to change the network type from “DHCP” to “Static”.

The default port number is 88. You may change it to any value (such as 8080) if you know the port number of 88 is blocked.

Then, note down the IP address and port number you see here. You might need them for port forwarding later.

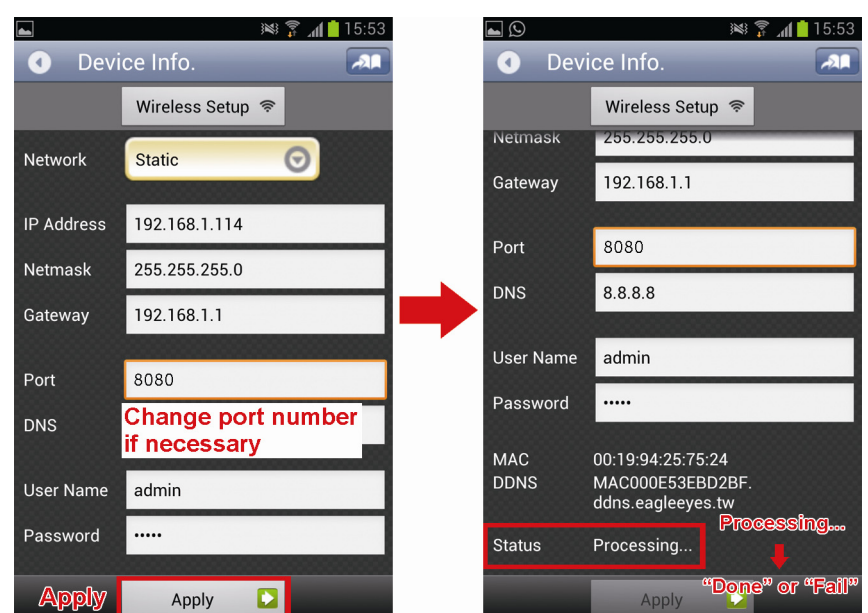


**Note:** It’s not recommended to use the port number of 80 since some phone carriers might block this port for network access.

Step4: Select “Apply” to confirm all your changes. Then, wait till you see “Done” or “Fail” in “Status”.

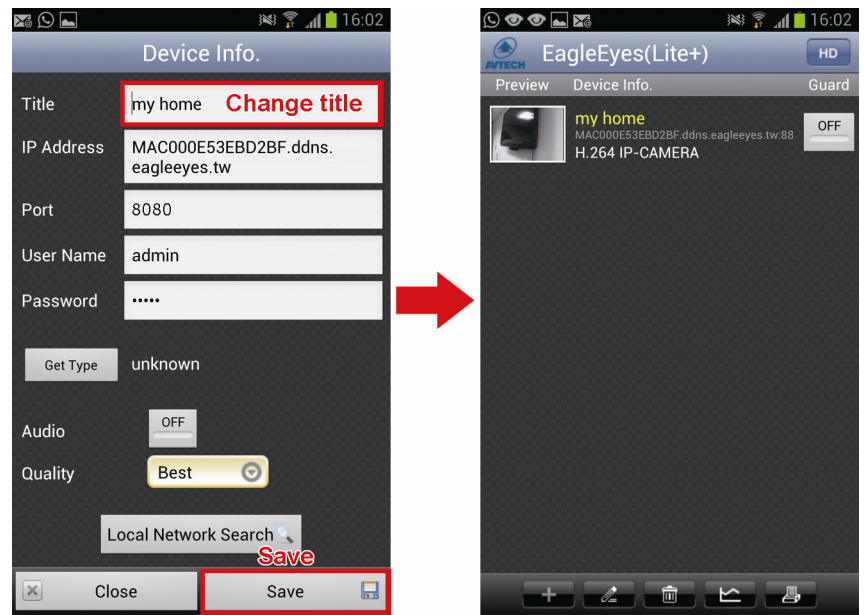
Regardless which message you see, proceed as instructed below:

- For **Done**, you’ll return to the new device page.
- For **Fail**, select “🔌” on the top right side. You’ll later be prompted to select “DDNS” or “Local IP”. Select “DDNS” and return to the new device page.



Step5: In the new device page, give a meaningful name for this connection in “Title”, and click “Save”.

Step6: Go to “Check your connection” below to examine your connection.



### Check your connection

Step1: Check if the LAN (🔌) and Internet (⚡) status indicators on the camera are always on.

- If they're both always on (no blinking), go to Step2.
- If the Internet status indicator (⚡) blinks after 5 seconds\*, please continue with configuring port forwarding as instructed in “APPENDIX 5 CONFIGURE PORT FORWARDING” at page 38.

\*The blinking frequency is 5 seconds on → 0.5 second off → 0.5 second on → 0.5 second off → 5 seconds on.

Step2: Switch the network mode to 3G mode on your android device.

Step3: Start EagleEyes, and select the connection you just added to see if you can access the camera successfully.

- If yes, your network setup is successful.
- If no, go to Step4.

Step4: The port you're using for this camera might be blocked by your phone carrier. Please start from Step1 of “Connect a camera to the Internet”, and change the port number to another value.

Step5: Complete the setup, and examine your connection again as instructed in “Check your connection”.

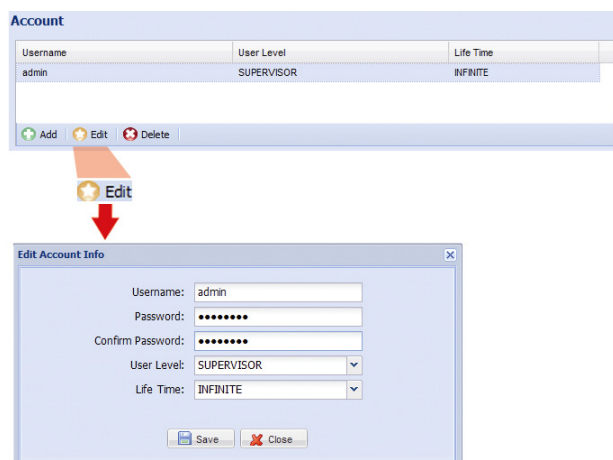
## 1.5 Change Default Account

To ensure your account safety, please access the camera after network configuration to change the default user name and password with new one you prefer.

### 1.5.1 From Web Browser

Log into the camera, and select “Config.” → “General” → “Account”.

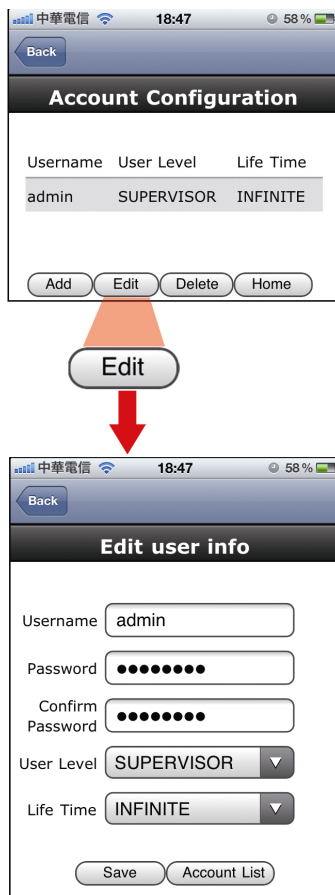
Select the default account “admin”, and click “Edit” to change the default password.



## 1.5.2 From iPhone / iPad

Log into the camera, and click “” on the top right corner to enter the system configuration page.

Scroll down the page and select “Advance”. Select “Advanced Setup” → “Account”. Then, select the default account “admin”, and click “Edit” to modify the default password.




## 2. BEFORE YOU START TO USE

After you finish network configurations, some camera configurations in “Config.” are recommended to complete for the camera to work properly.

Below assumes you’re using Internet Explorer to access the camera.

---

**Note:** For iPhone users, please access the camera, and select  on the top right corner of the live view to enter the configuration page.

---

### 2.1 Video Adjustment

When you’ve accessed the camera successfully for the first time, it’s recommended to adjust the video images if needed.

- To adjust the clearness of the video, rotate the camera lens manually as shown in *Figure 1*.
- To slightly adjust the color of the video, in the live page of your web browser, click “Config” on the top right side of the browser to open the configuration page.

Then, click “Camera” → “Color” to adjust the brightness / contrast / hue / saturation of the video images, as shown in *Figure 2*.

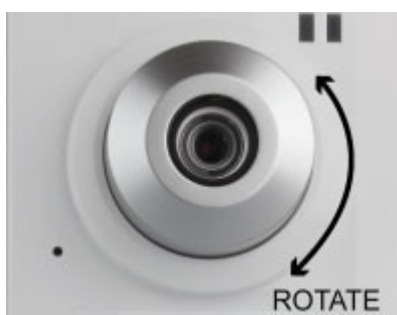


Figure 1

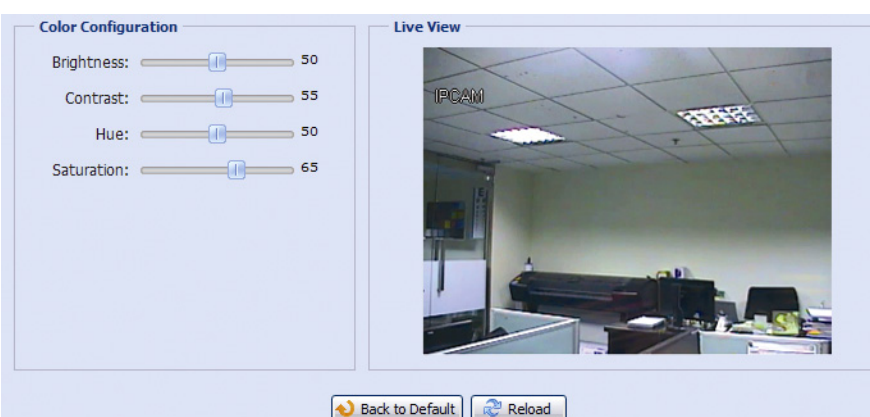


Figure 2

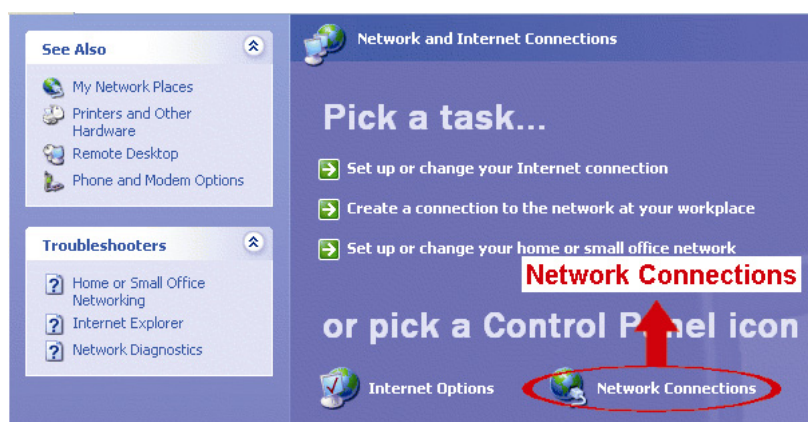
## APPENDIX 1 CHANGE IP ADDRESS OF YOUR LAPTOP / COMPUTER

For LAN connection with this network camera, you need to change the IP address of your laptop / computer to **192.168.1.xxx** (1~255, except 10) first.

**Note:** Before changing the IP address, make sure you note down the original IP address setting of your laptop / computer. You need to restore the IP address setting when you complete the network configuration of this camera.

*For Windows XP users:*

- a) Select “start” → “Control Panel” → “Network and Internet Connections” → “Network Connections” (If you’re in “Category View”).



- b) In “LAN or High-Speed Internet”, right-click on “Local Area Connection”, and select “Properties”.




**Note:** If your local area connection is not enabled, please also enable it.

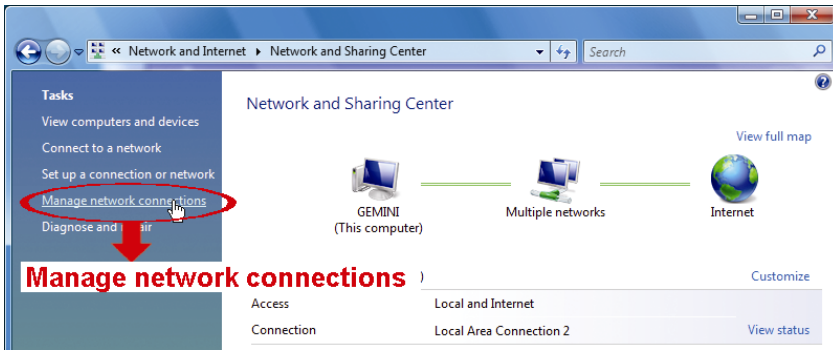
- c) In the “General” tab, select “Internet Protocol (TCP/IP)”, and select “Properties”.  
d) In the “General” tab, select “Use the following IP address”, and set the IP address to “192.168.1.XXX” (XXX can be any value from 1~255 except 10).

**Note:** It’s recommended to note down the current settings first and then change as instructed. It’s helpful when you need to restore the computer network settings for connecting to Internet later.

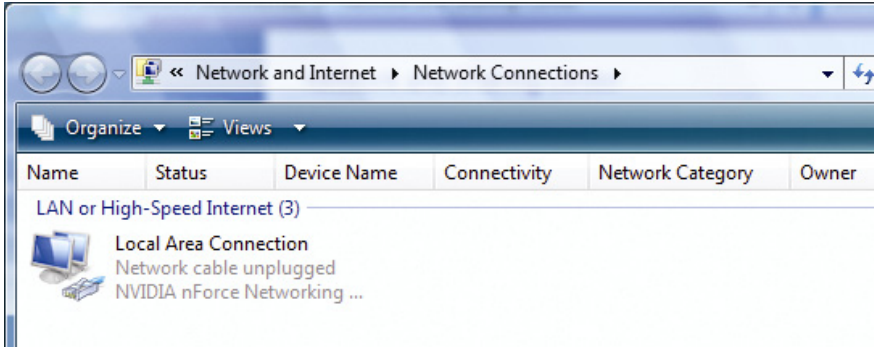
- e) Click “OK” to close the “Internet Protocol (TCP/IP) Properties” dialog box. Then, click “Close” to close the “Local Area Connection Properties” dialog box.

For Windows Vista users:

- a) Select “” (start) → “Control Panel” → “Network and Internet” to enter the “Network and Sharing Center”. Then, click “Manage network connections” (If you’re in “Category View”).



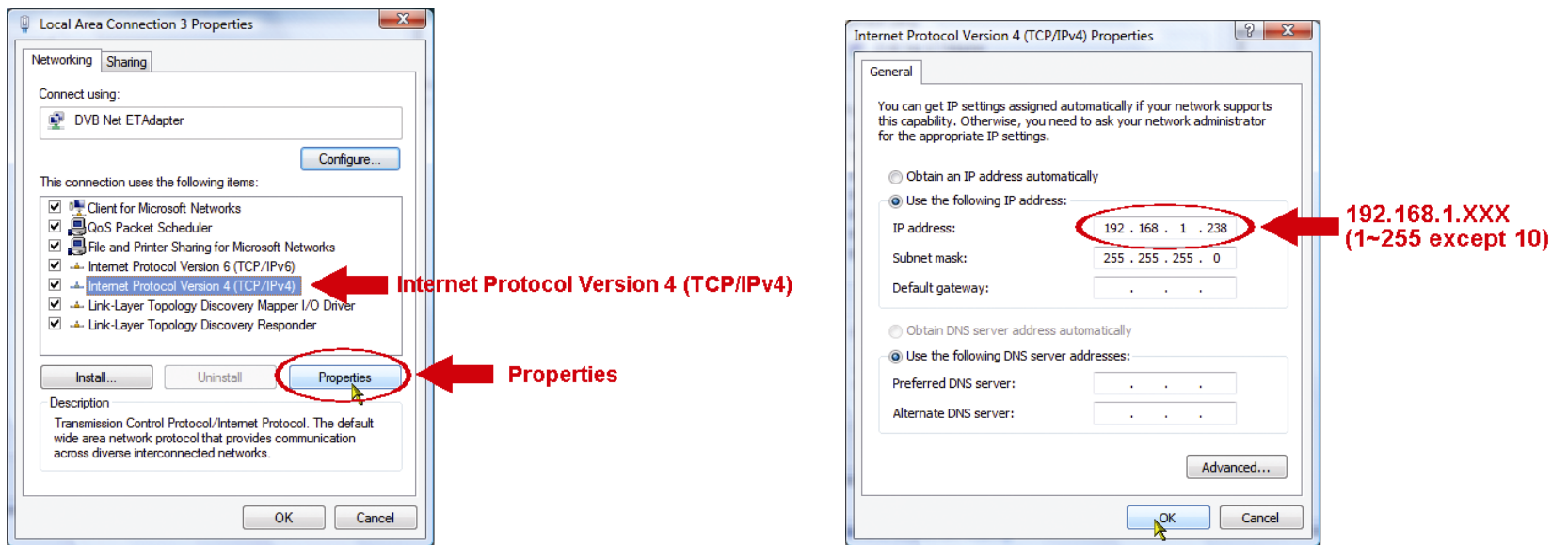
- b) Right-click on “Local Area Connection”, and select “Properties”.



**Note:** If your local area connection is not enabled, please also enable it.


- c) In the “Networking” tab, select “Internet Protocol Version 4 (TCP/IPv4)”, and select “Properties”.  
d) In the “General” tab, select “Use the following IP address”, and set the IP address as described below.

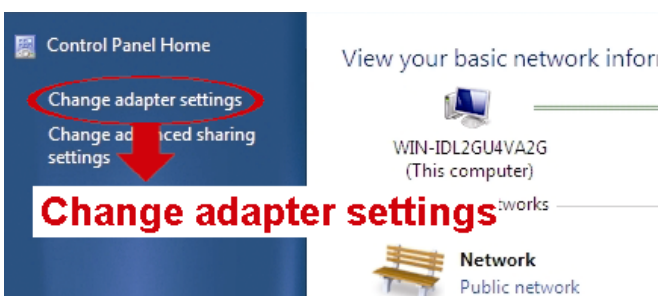
**Note:** It’s recommended to note down the current settings first and then change as instructed. It’s helpful when you need to restore the computer network settings for connecting to Internet later.



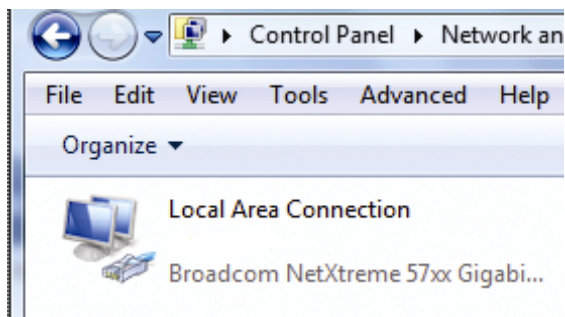
- e) Click “OK” to close the “Internet Protocol Version 4 (TCP/IPv4) Properties” dialog box. Then, click “Close” to close the “Local Area Connection Properties” dialog box.

For Windows 7 users:

- a) Select “” (start) → “Control Panel” → “Network and Internet” to enter the “Network and Sharing Center”. Then, click “Change adapter settings”.



b) Right-click on “Local Area Connection”, and select “Properties”.

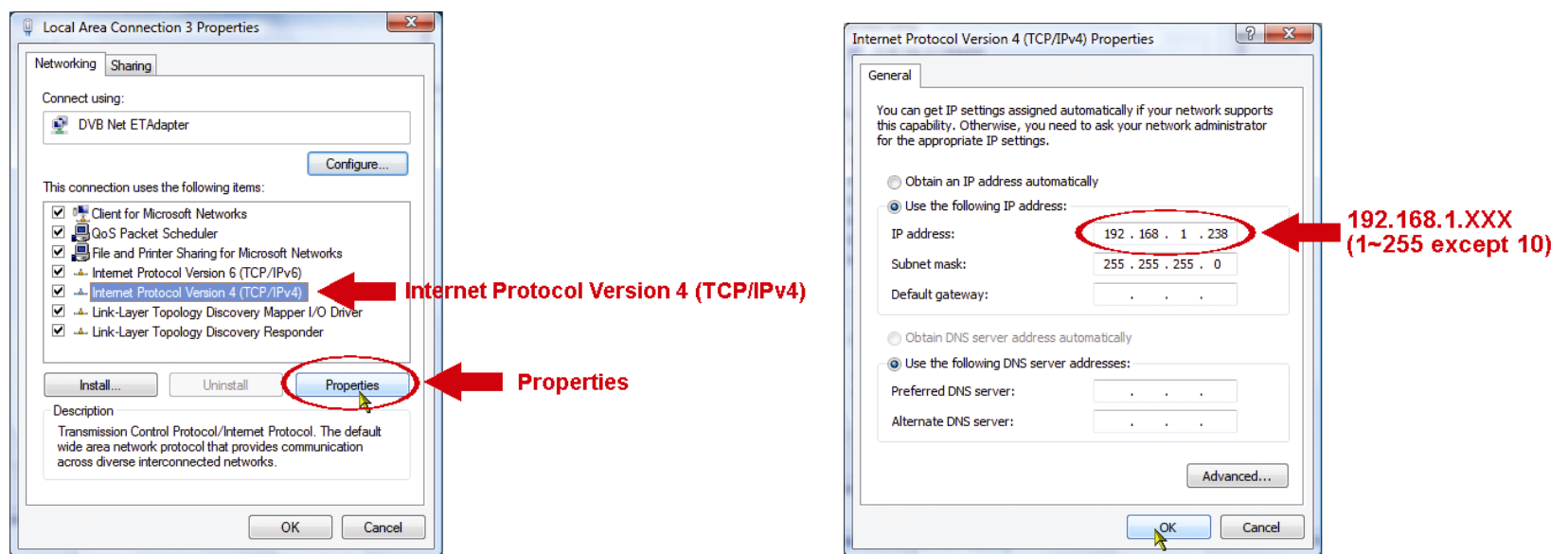


**Note:** If your local area connection is not enabled, please also enable it.

c) In the “Networking” tab, select “Internet Protocol Version 4 (TCP/IPv4)”, and select “Properties”.

d) In the “General” tab, select “Use the following IP address”, and set the IP address as described below.

**Note:** It’s recommended to note down the current settings first and then change as instructed. It’s helpful when you need to restore the computer network settings for connecting to Internet later.

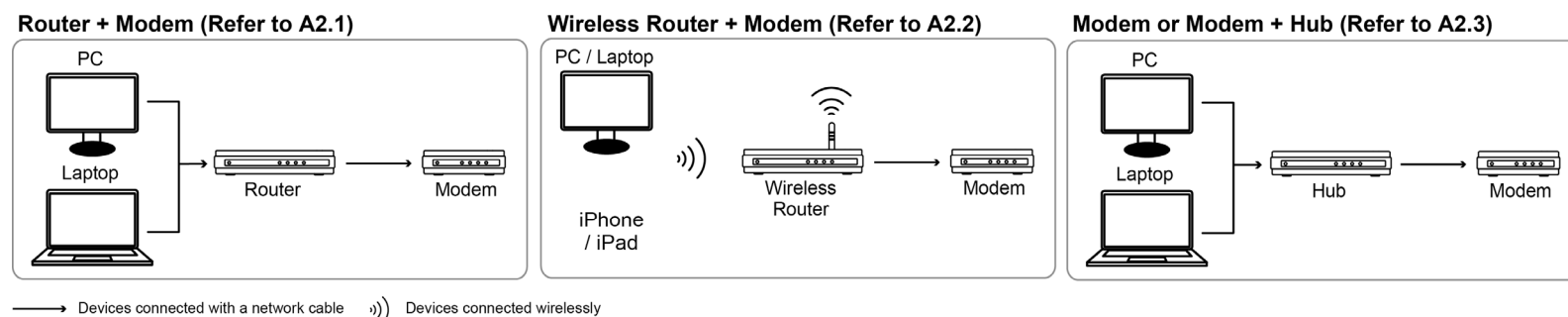


e) Click “OK” to close the “Internet Protocol Version 4 (TCP/IPv4) Properties” dialog box. Then, click “Close” to close the “Local Area Connection Properties” dialog box



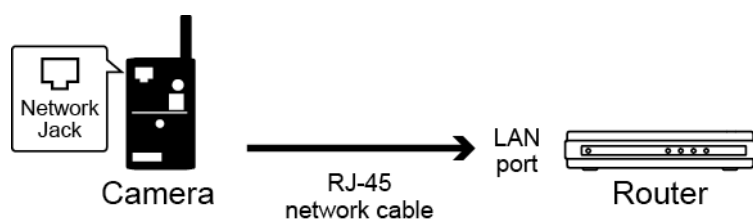
## APPENDIX 2 NETWORK CONFIGURATIONS WITH ROUTER / MODEM

If your network environment is “(Router + Modem”, “Wireless Router + Modem”, or “Modem” (or hub + Modem) as illustrated below, please follow the instructions below to configure the network setting of the camera.



Before starting the setup, make sure:

- The camera is powered on and connected to your (wireless) router with a RJ-45 network cable.



- LAN status indicator is always on.

### A2.1 Router + Modem

Before configuring the camera from your laptop / computer, make sure:

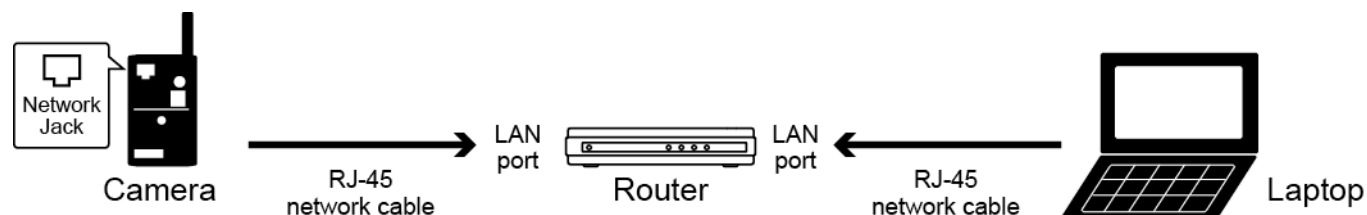
- You have a laptop or computer with the Windows 7, Vista or XP operating system.
- (Recommended) Your router supports UPnP, and this function is enabled.

**Note:** If your router doesn't support UPnP, you need to additionally access your router for port forwarding. For details, please refer to "APPENDIX 5 CONFIGURE PORT FORWARDING" at page 38.

- You have downloaded "IPScan.exe" in your laptop / computer.

**Note:** Please download "IPScan.exe" from [www.surveillance-download.com/user/n812.swf](http://www.surveillance-download.com/user/n812.swf).

Step1: Connect your laptop / computer to the router.



Step2: Open "IPScan.exe" (🔍) to search your camera. You will find two IP addresses:

- 192.168.2.10 - Please ignore this IP address.
- 192.168.30.155 - This is the address assigned by your wireless router, and the address may vary depending on router you're using. Note down the IP address you see, such as 192.168.30.155 in our example below, and also the port number.

Then, select the IP address assigned by your router (such as 192.168.30.155), and click "Configure" to note down the gateway IP address. It's the IP address of your router, and you might need it later for port forwarding.

**Note:** You may change the port number of "88" to other value if you know 88 is blocked by your Internet service provider or mobile carrier.

For the port number change to take effect, please also enter the user name (admin) and password "admin" to confirm.

**192.168.30.155:**

IP address assigned by your router

**192.168.2.10:**

Ignore this IP address

**GateWay:**

The IP address of your wireless router

IP	Port	Type	Mac
192.168.30.155	88	IP CAMERA (FIX)	00:0e:53:1d:6f:f1
192.168.2.10	88	IP CAMERA (FIX)	00:19:94:25:78:4f

Server IP: 192.168.30.155    DNS: 168.95.1.1  
MAC Address: 00:0e:53:1d:6f:f1    Web Port: 88  
NetMask: 255.255.255.0    User Name: admin  
GateWay: 192.168.30.1    Password: \*\*\*\*\*

**Web Port:**

Keep the default value "88", or change it to other value (such as 8080) if the port number of 88 is blocked by your service provider.

Step3: Open Internet Explorer on your laptop / computer, and enter the IP address and port number you just set in the URL column to access this camera, such as <http://192.168.30.155:88> in our example. In the login page, enter the user name, password, and security code to access.

**Note:** Please skip the wizard.

Step4: Go to "Config." → "Wireless", and in the setting page, switch from "DHCP" to "Static".

Change "Server IP", "Gateway", and "Port" as needed.

- "Server IP" is the IP address you're currently using for this camera.
- "Gateway" is the IP address you note down in Step2.
- "Port" is the port number you're currently using for this camera. The default value is "88". If you change it in Step2, please change the value here accordingly.

Wireless Configuration

IP Type:  Static IP     DHCP

Server IP: 192.168.30.155    **Server IP:** Change 192.168.2.10 to your current IP address  
Gateway: 192.168.30.1    **Gateway IP:** Change 192.168.2.254 to the gateway IP address you see in Step2  
Net Mask: 255.255.255.0  
Port: 88    **Port:** Change the port number to the value you're currently using  
MAC Address: 00:19:94:25:78:4f

Save

Profile Name List

Activate	Profile Name
<input checked="" type="checkbox"/>	WLAN03

Profile Detail

Profile Name: WLAN03  
SSID: WLAN03  
Network Type: Infrastructure  
Authenticate Mode: OPEN  
Encrypt Type: AES  
Channel: 6  
Key: \*\*\*\*\*

Step5: Go to "Config." → "DDNS", and enable the DDNS service.

DDNS Configuration    **DDNS: Enable**

DDNS:  Enable     Disable

System Name: default

Hostname: MAC000e531d6ff1    .ddns.eagleeyes.tw

E-Mail: \_\_\_\_\_

Save    Reload

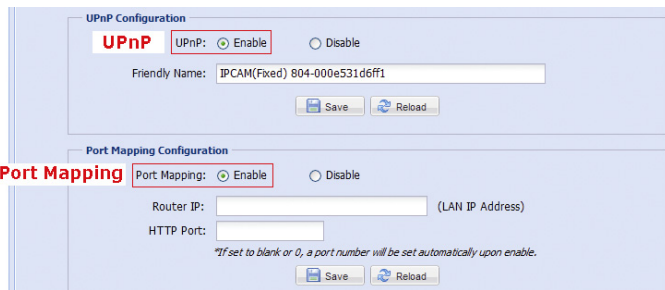
- If your router supports UPnP, please proceed Step6.
- If your router doesn't support UPnP, click "Save", and access your router for port forwarding as instructed in "APPENDIX 5 CONFIGURE PORT FORWARDING" at page 38.

Step6: Go to "UPnP", and enable the UPnP service.

Then, enable "Port Mapping", and click "Save" to start port mapping.

When the configurations are saved successfully, you'll see a message indicating the IP address and port number assigned to your device.

Note down the IP address and port number, and log out the camera.



You can use the host name you noted down in Step5 to access your camera, such as *MAC000e531d6ff1.ddns.eagleeyes.tw*, or the IP address shown in Step6 to access your camera. And the default port number is 88.

Step7: Check the Internet status indicator (⚡):

- If it's always on (no blinking), the network setup is successful.
- If it blinks after 5 seconds\*, please continue with configuring port forwarding as instructed in "APPENDIX 5 CONFIGURE PORT FORWARDING" at page 38.

\*The blinking frequency is 5 seconds on → 0.5 second off → 0.5 second on → 0.5 second off → 5 seconds on.

### Check your connection

Step1: Check if the LAN (🔌) and Internet (⚡) status indicators on the camera are always on.

Step2: Connect your laptop / computer to Internet by using other network, and open Internet Explorer. Or, switch the network mode of your smart phone to 3G, and open the built-in web browser.

Step3: Enter the IP address or host name you just noted down and the port number in the URL address box of the web browser, and see if you can access the login page of the camera successfully.

The format is "*http://ipaddress:portnum*" or "*http://hostname:portnum*".

- If yes, your network setup is successful.
- If no, go to Step4.

Step4: The port you're using for this camera might be blocked by your Internet service provider or phone carrier. Please start from Step2 of the section "A2.1", and change the port number to another value.

Step5: Complete the setup, and examine your connection again as instructed in "Check your connection".

**Note:** If you still can't access the camera, please visit the support page of [www.eagleeyesccv.com](http://www.eagleeyesccv.com) for more details.

## A2.2 Wireless Router + Modem

You may use your laptop / computer, or your iPhone / iPad to complete the network configuration of the camera.

### Configure on Laptop / Computer

Before configuring the camera from your laptop / computer, make sure:

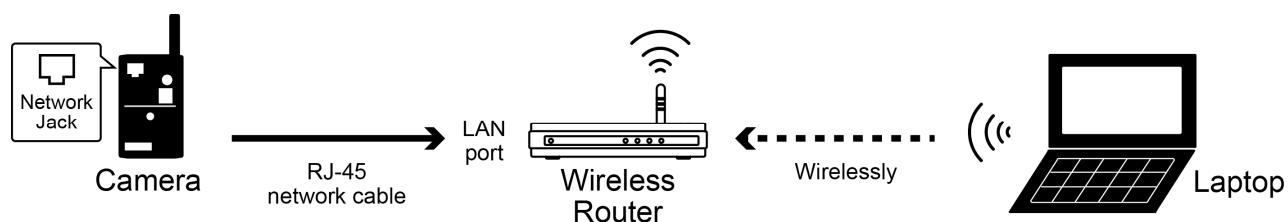
- You have a laptop or computer with the Windows 7, Vista or XP operating system.
- (Recommended) Your wireless router supports UPnP, and this function is enabled.

**Note:** If your wireless router doesn't support UPnP, you need to additionally access your router for port forwarding. For details, please refer to "APPENDIX 5 CONFIGURE PORT FORWARDING" at page 38.

- You have downloaded "IPScan.exe" in your laptop / computer.

**Note:** Please download "IPScan.exe" from [www.surveillance-download.com/user/n812.swf](http://www.surveillance-download.com/user/n812.swf).

Step1: Connect your laptop / computer to the wireless router.



Step2: Open "IPScan.exe" (🔍) to search your camera. You will find two IP addresses:

- 192.168.2.10 - Please ignore this IP address.
- 192.168.30.155 - This is the address assigned by your wireless router, and the address may vary depending on router you're using. Note down the IP address you see, such as 192.168.30.155 in our example below, and also the port number.

Then, select the IP address assigned by your wireless router (such as 192.168.30.155), and click "Configure" to note down the gateway IP address. It's the IP address of your wireless router, and you might need it later for port forwarding.

**Note:** You may change the port number of "88" to another value if you know 88 is blocked by your Internet service provider or mobile carrier.

For the port number change to take effect, please also enter the user name (admin) and password "admin" to confirm.

**192.168.30.155:**  
IP address assigned by your router

**192.168.2.10:**  
Ignore this IP address

**GateWay:**  
The IP address of your wireless router

**Web Port:**  
Keep the default value "88", or change it to other value (such as 8080) if the port number of 88 is blocked by your service provider.

Step3: Open Internet Explorer on your laptop / computer, and enter the IP address and port number you just set in the URL column to access this camera, such as <http://192.168.30.155:88> in our example.

In the login page, enter the user name, password, and security code to access.

**Note:** Please skip the wizard.

Step4: Go to "Config." → "Wireless", and in the setting page, switch from "DHCP" to "Static".

Change "Server IP", "Gateway", and "Port" as needed.

- "Server IP" is the IP address you're currently using for this camera.
- "Gateway" is the IP address you note down in Step2.
- "Port" is the port number you're currently using for this camera. The default value is "88". If you change it in Step2, please change the value here accordingly.

**Wireless**

Wireless Configuration

IP Type:  Static IP  DHCP

Server IP: 192.168.30.155 **Server IP:**  
Change 192.168.2.10 to your current IP address

Gateway: 192.168.30.1 **Gateway IP:**  
Change 192.168.2.254 to the gateway IP address you see in Step2

Net Mask: 255.255.255.0

Port: 88 **Port:**  
Change the port number to the value you're currently using

MAC Address: 00:19:94:25:78:4f

Save

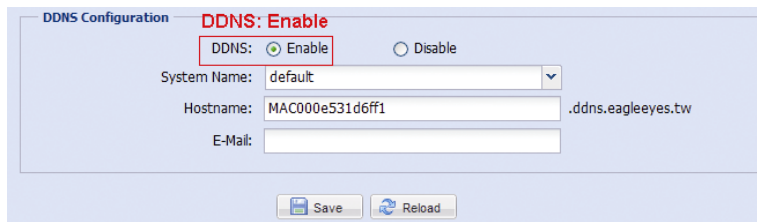
Profile Name List

Activate	Profile Name
<input checked="" type="checkbox"/>	WLAN03

Profile Detail

Profile Name : WLAN03  
SSID : WLAN03  
Network Type : Infrastructure  
Authenticate Mode : OPEN  
Encrypt Type : AES  
Channel : 6  
Key : \*\*\*\*\*

Step5: Go to “Config.” → “DDNS”, and enable the DDNS service.



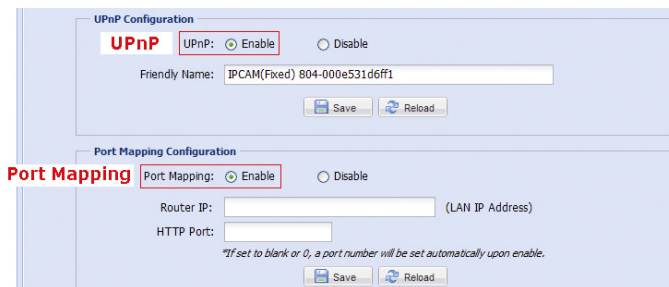
- If your router supports UPnP, please proceed Step6.
- If your router doesn't support UPnP, click “Save”, and access your router for port forwarding as instructed in “APPENDIX 5 CONFIGURE PORT FORWARDING” at page 38.

Step6: Go to “UPnP”, and enable the UPnP service.

Then, enable “Port Mapping”, and click “Save” to start port mapping.

When the configurations are saved successfully, you'll see a message indicating the IP address and port number assigned to your device.

Note down the IP address and port number, and log out the camera.



You can use the host name you noted down in Step5 to access your camera, such as *MAC000e531d6ff1.ddns.eagleeyes.tw*, or the IP address shown in Step6 to access your camera. And the default port number is 88.

Step7: Check the Internet status indicator (⚡):

- If it's always on (no blinking), the network setup is successful.
- If it blinks after 5 seconds\*, please continue with configuring port forwarding as instructed in “APPENDIX 5 CONFIGURE PORT FORWARDING” at page 38.

\*The blinking frequency is 5 seconds on → 0.5 second off → 0.5 second on → 0.5 second off → 5 seconds on.

### **Check your connection**

Step1: Check if the LAN (🔌) and Internet (⚡) status indicators on the camera are always on.

Step2: Connect your laptop / computer to Internet by using other network, and open Internet Explorer. Or, switch the network mode of your smart phone to 3G, and open the built-in web browser.

Step3: Enter the IP address or host name you just noted down and the port number in the URL address box of the web browser, and see if you can access the login page of the camera successfully.

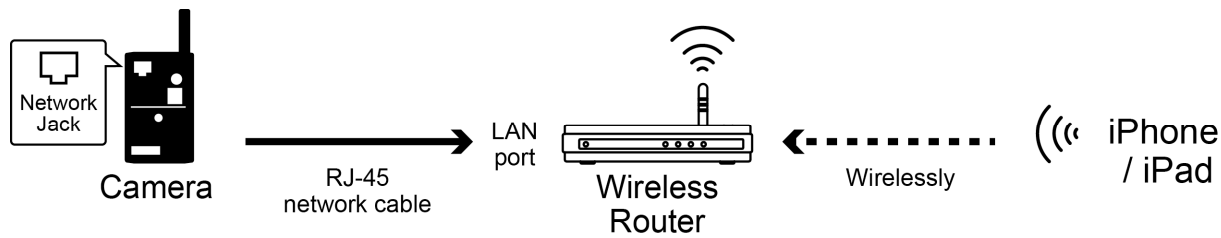
The format is “*http://ipaddress:portnum*” or “*http://hostname:portnum*”.

- If yes, your network setup is successful.
- If no, go to Step4.

Step4: The port you're using for this camera might be blocked by your Internet service provider or phone carrier. Please start from Step2 of “Configure on Laptop / Computer”, and change the port number to another value.

Step5: Complete the setup, and examine your connection again as instructed in “Check your connection”.

Configure on iPhone / iPad



Step1: Connect your iPhone to the wireless router as the camera connected.

Step2: Open “EagleEyes” on your iPhone or iPad.

In the address book, click “+” to add new device. Then, select “Local Network Search” to search your network camera. You’ll see two IP addresses as shown below.

Ignore 192.168.2.10, and select the other IP address, such as 192.168.2.105 in our example, to enter the setting page.

**Note:** The other IP address, such 192.168.2.105 in our example, is the address assigned by your wireless router, and may vary depending on the router you’re using.

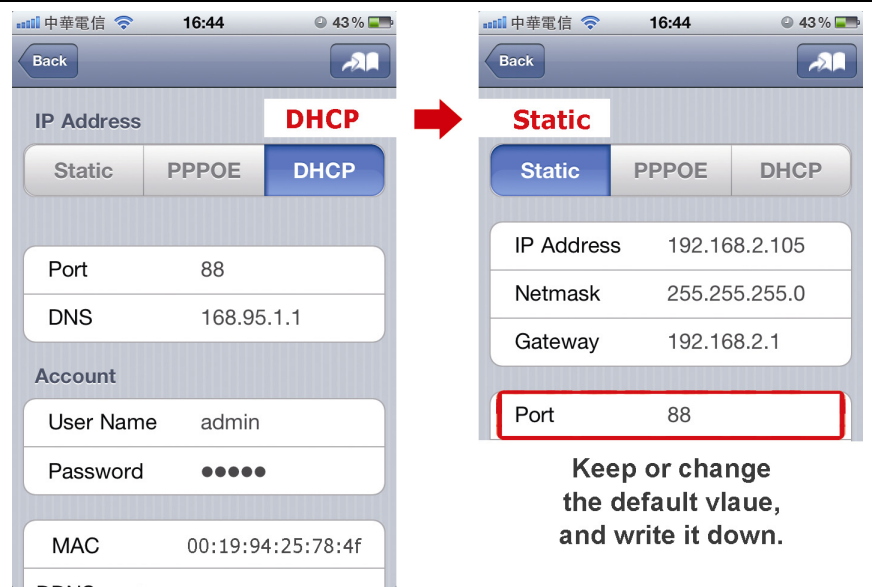


**Note:** If you can’t find the camera, make sure your LAN status indicator (🔍) is always on, and search again after 3 minutes.

Step3: Select the IP address you want to configure to show the IP address setting page.


The default port number is 88. You may change it to any value (such as 8080) if the port number of 88 is blocked.

Then, note down the IP address and port number you see here. You might need them for port forwarding later.



Step4: Select “Apply” to confirm all your changes. Then, wait till you see “**Done**” or “**Fail**” in “Status”.

Regardless which message you see, proceed as instructed below:

- For **Done**, you’ll return to the new device page.
- For **Fail**, select “” on the top right side. You’ll later be prompted to select “DDNS” or “Local IP”. Select “DDNS” and return to the new device page.



Status Change  
When Selecting “Apply”:


Processing...  
↓  
“Done” or “Fail”

Step5: In the new device page, give a meaningful name for this connection in “Title”, and click “Save”.

Step6: Go to “Check your connection” below to examine your connection.

### **Check your connection**

Step1: Check if the LAN () and Internet () status indicator is always on.

- If they’re both always on (no blinking), go to Step2.
- If the Internet status indicator () blinks after 5 seconds\*, please continue with configuring port forwarding as instructed in “APPENDIX 5 CONFIGURE PORT FORWARDING” at page 38.

\*The blinking frequency is 5 seconds on → 0.5 second off → 0.5 second on → 0.5 second off → 5 seconds on.

Step2: Switch the network mode to 3G mode on iPhone or iPad.

Step3: Start EagleEyes, and select the connection you just added to see if you can access the camera successfully.

- If yes, your network setup is successful.
- If no, go to Step4.

Step4: The port you’re using for this camera might be blocked by your phone carrier. Please start from Step1 of the section “Configure on iPhone / iPad”, and change the port number to another value.

Step5: Complete the setup, and examine your connection again as instructed in “Check your connection”.

---

**Note:** If you still can’t access the camera by the 3G network, please visit the support page of [www.eagleeyesctv.com](http://www.eagleeyesctv.com) for more details.

---

## A2.3 Modem / Hub + Modem

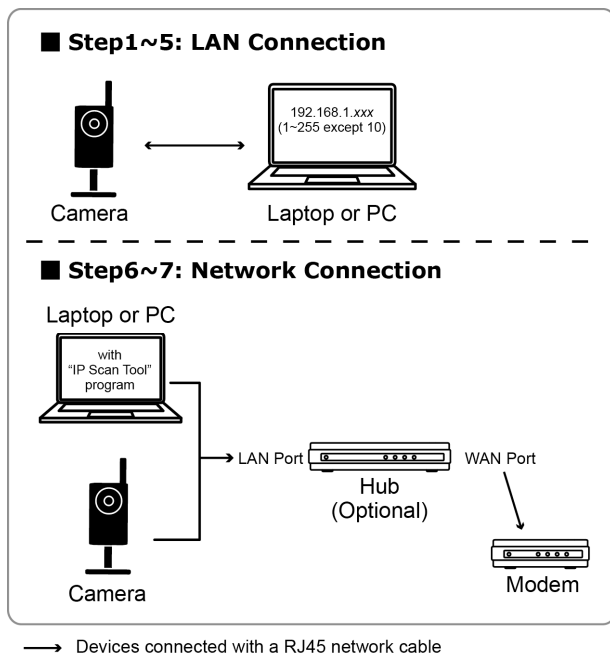
Before configuring the camera from your laptop / computer, make sure:

- Your Windows operating system is Windows 7, Vista or XP.
- You have changed the IP address of your laptop / computer to “192.168.1.xxx”, where xxx could be 0~255 except 10.

---

**Note:** To know how to change the IP address of your laptop / computer, please refer to “APPENDIX 1 CHANGE IP ADDRESS OF YOUR LAPTOP / COMPUTER” at page 22.

---



Step1: Disconnect your laptop / computer from the hub or modem, and connect it to this camera with a network cable.

Step2: Open Internet Explorer on your laptop / computer, and enter “<http://192.168.1.10:88>” in the URL column to access this camera.

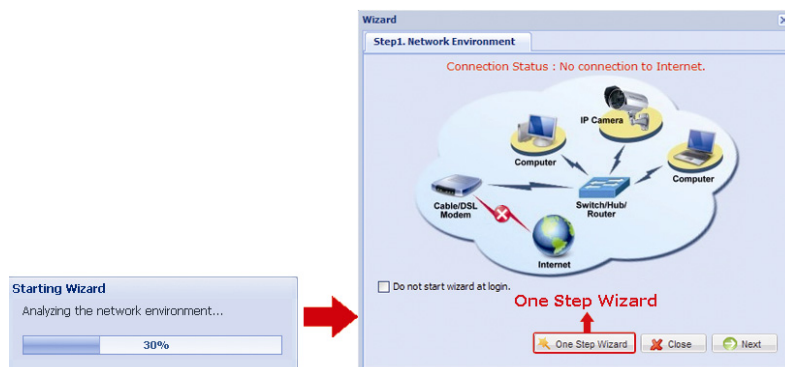
In the login page, enter the user name, password, and security code to access.

---

**Note:** The default user name and password for remote access are both “**admin**”.

---

Step3: The wizard starts to analyze your network environment. When it's completed, select “One Step Wizard” to enter the quick camera setting page.





Item	Description
Account	Change your default account password if needed. This change can also be made in “Config.” → “General” → “Account”.
Date and Time	Check and select the current date and time.
Network	Configure your network setting based on the network type you’re using. For details, please refer to Step4 & Step5.

Step4: In “Network”, configure the network setting of your camera based on the network type you’re using. There’re three types: Static IP, PPPOE and DHCP.

**For Static IP:**

- Enter the information of “Server IP”, “Gateway” and “Net Mask” obtained from your ISP (Internet Service Provider).
- Enter the port number. The valid number ranges from 1 to 9999. The default value is 88.
- Click “Save” to save your network configurations, and log out.
- Disconnect your camera and your computer, and connect them to Internet separately. Then, enter the IP address you just note down in the URL address box of the web browser, and see if you can access the camera successfully.

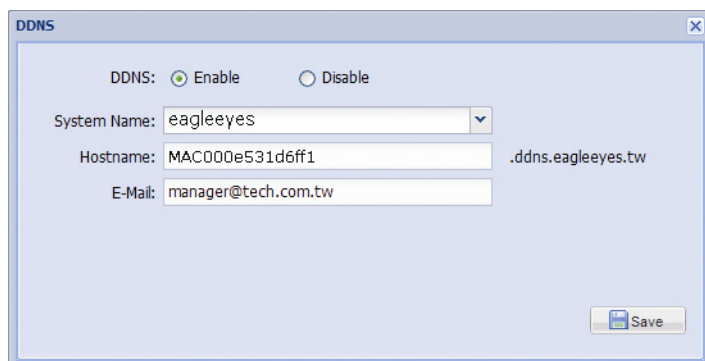
**For PPPOE:**

- Enter the user name and password obtained from your ISP, and click “Save”.
- Continue the DDNS setting as instructed in Step5.

**For DHCP:**

- Before selecting this option, you need to finish the DHCP router settings first.
- Get a router and connect it to the Internet via your computer (with Static IP or PPPoE setting). There are different setting methods for different routers. Please refer to their respective user manuals.
- Continue the DDNS setting as instructed in Step5.

Step5: (Optional) Click “DDNS” (  DDNS ) to continue setting for PPPOE and DHCP.



- a) Enable DDNS.
- b) Select “eagleeyes” in “System Name”.
- c) In “Hostname”, keep the default value, i.e. the MAC address of this camera. Then, note down the whole address of the camera, for example, *MAC000e531d6ff1.ddns.eagleeyes.tw*.
- d) (Optional) Enter your email address to receive messages from the DDNS server.

---

**Note:** Please at least use the default address to access your network camera remotely once. This is to ensure our DDNS server has your camera registered. Then, you may change the host name to a more meaningful name.

---

- e) Click “Save” to return to the network setting page. Then, click “Next”.

Step6: Disconnect your camera and your laptop / computer, and connect them to your hub or modem separately for Internet access


---

**Note:** Please also remember to restore the IP setting of your laptop for Internet access to work properly.

---

### **Check your connection**

Step1: Check if the LAN (  ) and Internet (  ) status indicator is always on.

- If they're both always on (no blinking), go to Step2.
- If the Internet status indicator (  ) blinks after 5 seconds\*, please continue with configuring port forwarding as instructed in “APPENDIX 5 CONFIGURE PORT FORWARDING” at page 38.

\*The blinking frequency is 5 seconds on → 0.5 second off → 0.5 second on → 0.5 second off → 5 seconds on.

Step2: Switch the network mode to 3G mode on iPhone or iPad.

Step3: Start EagleEyes, and select the connection you just added to see if you can access the camera successfully.

- If yes, your network setup is successful.
- If no, go to Step4.

Step4: The port you're using for this camera might be blocked by your phone carrier. Please start from Step1 of the section “Configure on iPhone / iPad”, and change the port number to another value.

- Step5: Complete the setup, and examine your connection again as instructed in “Check your connection”.

## APPENDIX 3 MOBILE SURVEILLANCE VIA EAGLEEYES

*EagleEyes* is a mobile phone program used with our surveillance system for remote surveillance. It has several advantages:

- It's free (Except *EagleEyes Plus* for iPhone).
- It's compatible with several popular mobile platforms, such as iPhone, iPad and Android.

It's easy to download, install and configure. For more details about configuring and operating this program, please visit our official website [www.eagleeyesccv.com](http://www.eagleeyesccv.com).

### A3.1 Prerequisites

Before installing *EagleEyes* to your mobile phone for remote surveillance, make sure you have checked the following:

- ✓ Your mobile platform is iPhone, iPad & Android.
- ✓ Mobile Internet services are subscribed and available to use for your mobile phone.

**Note:** You might be charged for Internet access via wireless or 3G networks. For the Internet access rate details, please check with your local network operator or service provider.

- ✓ You have noted down the IP address, port number, user name and password used to access your network camera from Internet.

### A3.2 Where to download

Connect to [www.eagleeyesccv.com](http://www.eagleeyesccv.com) from your mobile phone, and sign in.

**Note:** Please **DO NOT** try to download *EagleEyes* from your computer.

Then, follow the steps below to download the program.

The screenshot shows the AVTECH website interface. At the top, there is a navigation bar with 'Products' and 'Support' links, a search box, and a language dropdown set to 'English'. A 'Register | Login' link is also present. Below the navigation bar, a 'Product Selector' sidebar is visible on the left, with categories like 'Software', 'IP Camera', 'NVR', 'CCTV', and 'Accessory'. The 'Software' category is selected, and 'Mobile-Based EagleEyes' is highlighted. The main content area features a large banner with the text 'Anytime & Anywhere Protect Your Life!!' and 'No.1 Mobile Surveillance Software in the World.' Below the banner, there is a section titled '> Product > Mobile-Based EagleEyes' with a descriptive paragraph. At the bottom, there are six download buttons for different mobile platforms: iPad, iPhone, Android, BlackBerry, Symbian, and Win Mobile. Red annotations with numbers 1 through 4 are overlaid on the page to indicate the steps: 1. Register or Login, 2. Products => Software, 3. Mobile-Based EagleEyes, and 4. Mobile-Based EagleEyes.

When the download is completed, *EagleEyes* will be installed automatically to the location where all applications are saved in your phone by default, or where you specify.

# APPENDIX 4 ENABLE PUSH VIDEO

## A4.1 What's Push Video

“Push Video” is an active notification system, different from traditional FTP & Email notification methods. It's more active and stable, but also easier to be affected by your network bandwidth.

When “Push Video” is enabled and any human detection event occurs, you'll be able to receive notifications on your iPhone / iPad / Android mobile device within 5 seconds.

You may also configure the camera to send notifications for other alarm events when your camera has an external alarm device connected. For details, please refer to “4.6.2 Push Video” in “Operation Guide” from [www.surveillance-download.com/user/n812.swf](http://www.surveillance-download.com/user/n812.swf).

## A4.2 Prerequisites

Before configure Push Video, make sure you have checked the following:

- ✓ You have an iPhone / iPad / Android mobile device with our self-developed program, “EagleEyes”, installed. For details, please refer to “A3.2 Where to download” at page 35.
- ✓ You have configured the IP address of your camera in the EagleEyes address book, and it's accessible from your iPhone / iPad / Android mobile device.

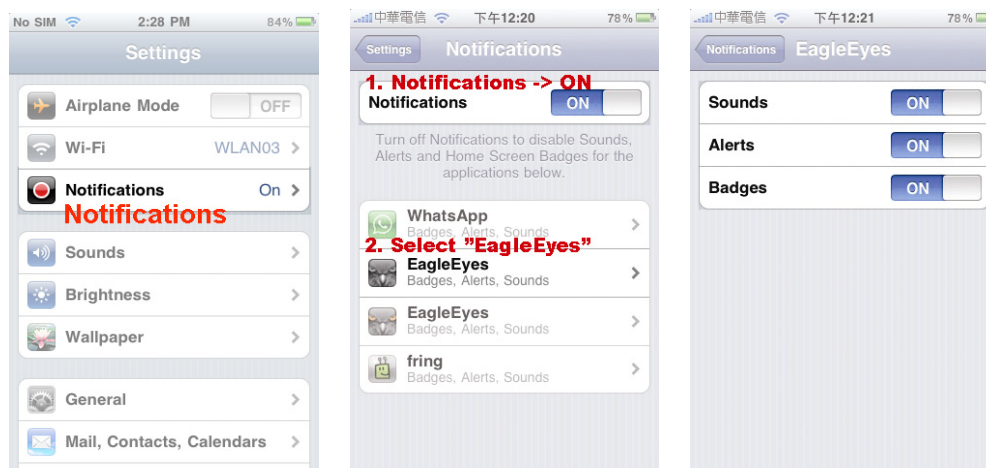
## A4.3 Enable Push Video

### A5.3.1 From iPhone / iPad

Step1: In the iPhone / iPad main menu, select “Settings” → “Notifications”.

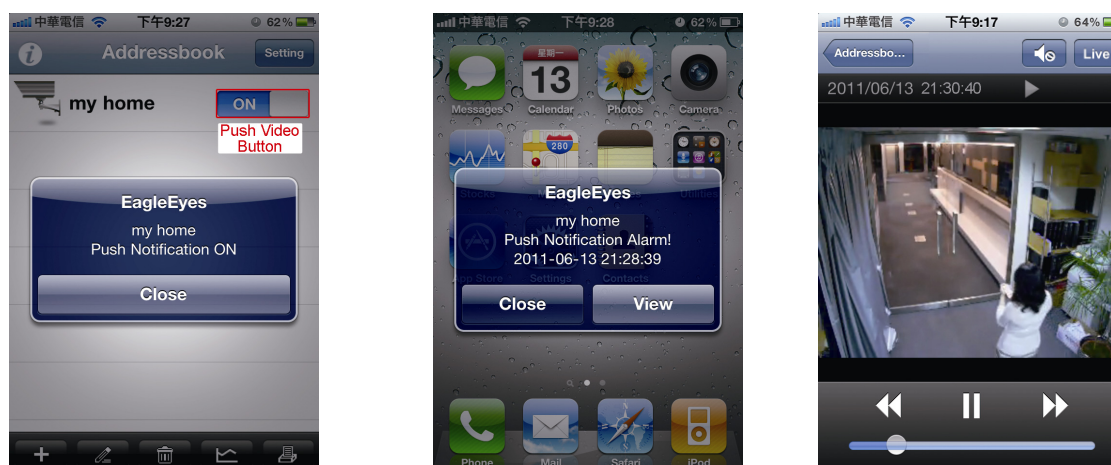
-- Make sure “Notifications” is set to “ON”.

-- Select “EagleEyes”, and make sure its settings are set to “ON”.



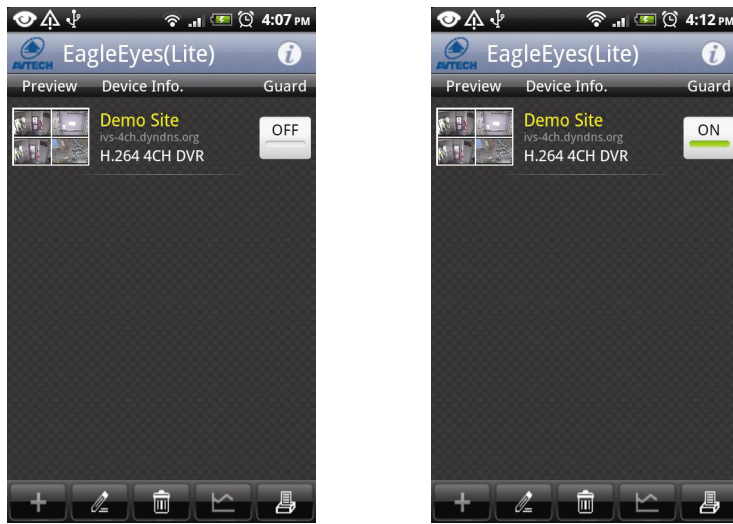
Step2: Open “EagleEyes”, and switch the Push Video button to “ON”. You'll receive the message indicating that Push Notification (Push Video) is on.

Step3: Return to the main menu of your iPhone / iPad. You'll receive event notifications when there's a human detection event. Select “View” to immediately play the recorded clip.



### A4.3.2 From Android Mobile Device

In the address book, switch “Guard” from “OFF” to “ON”.



## APPENDIX 5 CONFIGURE PORT FORWARDING

You need to additionally access your router for port forwarding when your router doesn't support UPnP. Each router has different setting page. Here we're taking D-Link wireless router as an example.

Step1: Access your router for port forwarding.

- If you're configuring the camera with laptop / computer or iPhone / iPad over wireless network, open your web browser, e.g. Internet Explorer or Safari, and enter the IP address of your router.
- If you're configuring the camera with laptop / computer over LAN, disconnect the camera and connect to your router. Then, open your browser, e.g. Internet Explorer, and enter the IP address of your router.

Step2: In the router setting interface, go to the port forwarding (or virtual server) rule configuration page.

**Note:** The naming of port forwarding or virtual server may vary based on different router brands. To know where it is, please refer to the user manual of your router.

Then, enter the IP address and port number you set for the camera, and enable this rule.

Take D-Link router as an example:

Go to "ADVANCED" → "PORT FORWARDING".

The screenshot shows the D-Link DIR-635 router's web interface. The main content area is titled "PORT FORWARDING" and contains a table of port forwarding rules. The first rule is highlighted with a red box. The table has columns for Name, IP Address, Application Name, Computer Name, Ports to Open, and Schedule. The first rule is named "my home", has an IP Address of "192.168.2.25", and has "88" listed for both TCP and UDP ports. The "Ports to Open" section is also highlighted with a red box. The page includes a sidebar with navigation options and a "Helpful Hints..." section.

IP Address:	The IP address of the camera assigned by your router.
Ports to Open:	The port number you set for the camera.

## APPENDIX 6 ADDING WIRELESS PROFILE MANUALLY

You can also add the wireless profile manually in the system configuration page from the web browser.

Step1: Click “Add” to create a profile manually.


Step2: In “Profile Detail”, enter all the necessary information for access the wireless network, and click “Save”.  
The selected wireless access point / router will be added to “Profile Name List”.

**Note:** The setting items shown below may vary based on each option selected.

Item		Description
Profile Name		Give a meaningful name for this Wireless profile.
SSID		This is the name of the wireless access point / router your camera wants to configure for.
Network Type	Infra	Select it when the camera will access the wireless network via an access point or router.
	Ad-hoc	Select it when the camera will connect to other wireless devices, such as your computer or laptop, with a wireless connection.
Authentication		Check which authentication method is used for the wireless access point / router and select the correct one: “Open”, “Shared”, WPAPSK” or “WPA2PSK”.
Encryption Type		Check which encryption type is used for the wireless access point / router and select the correct one: “WEP”, TKIP” or “AES”. Select “NONE” to disable key authentication for wireless network access.
Default Key		In 64-bit WEP, 4 keys are available; in 128-bit WEP, only 1 key is available. Check which key is used for the wireless access point / router and select the correct one.
Key		Enter the key used to access the wireless access point / router. <u>When “WEP” is selected</u> <ul style="list-style-type: none"> <li>For 64 bit, the length of the key allows up to 10 alphanumeric characters or 5 ASCII characters.</li> <li>For 128 bit, the length of the key allows up to 26 alphanumeric characters or 13 ASCII characters.</li> </ul> <u>When “TKIP” or “AES” is selected</u> The length of the key allows 8 ~ 63 alphanumeric characters.
Channel		Check which channel is used for the wireless access point / router and select the correct one.

## APPENDIX 7 Q&A

For more details about EagleEyes Q&A, please visit our official website: [www.eagleeyesctv.com](http://www.eagleeyesctv.com).

Question	Answer
<p>Does this camera support quick wireless connection setup with just one press?</p>	<p>Yes, and this support must work with the router which also supports quick wireless connection setup. Users do not need to manually search and enter the password to join the wireless network. All setup and connection can be done with just one press.</p> <p>To use this function, your router must be compatible with WPA or WPA2 security. And the naming of this function may vary based on the brand of each router. For details, please check the user manual of your wireless router.</p>
<p>I can connect to this camera in my house or office where it's installed with wireless network.</p> <p>But when I leave my house or office, I can't connect to it from my mobile phone (with 3G network), or other computer (connected to Internet). Why?</p>	<p>You didn't configure this camera to Internet, but only in LAN.</p> <p>Please follow the steps in this manual to complete network configurations, or it's recommended for you to check with your local installer or reseller for this service because it's usually hard for a person who doesn't have network knowledge to set network configurations.</p>
<p>My live images are not fluent. Why?</p>	<p>Image fluency could be affected by the local network upload bandwidth, router efficiency, client network download bandwidth, complexity of live view, and more.</p> <p><b>Available for remote access from Internet Explorer and iPad only:</b> To have the best image fluency, select "QVGA"; to have the best image quality, select "SXVGA"; to have normal image fluency and quality, select "VGA".</p>
<p>What's "Push Video"?</p>	<p>"Push Video" is an active notification system, different from traditional FTP &amp; Email notification methods.</p> <p>When "Push Video" is enabled and any human detection event occurs, you'll be able to receive notifications on your iPhone / iPad / Android mobile device within 5 seconds.</p> <p>For more details about "Push Video", please refer to "APPENDIX 4 ENABLE PUSH VIDEO" at page 36.</p>
<p>The detection range of the built-in human detection sensor seems too short and the sensor is not sensitive enough. Did I do anything wrong on installation?</p>	<p>The human detection sensor might be influenced by the temperature of ambient environment and human beings, and the applicable working temperature is up to 30°C. To get more accurate and precise detection, you may connect external alarm devices, such as magnetic contacts.</p>
<p>The live video keeps flickering. Why?</p>	<p>Please try adjusting the power line frequency to "60 Hz" or "50 Hz" for the camera.</p> <p>For iPhone users, access the camera, and select  on the top right corner to enter IPCAM Configuration page. Then, scroll down and select "Advanced". Go to "Advance Setup" → "Camera" to change setting.</p> <p>For access from Internet Explorer, log into the camera, and select "Config." → "Camera" → "Camera".</p>